

WordComplete

for Windows

Type better, Type less - we do the rest!

Version 1.20 Release 4

User's Guide

**WordComplete: for Windows; Type better, Type less - we do the rest!; Version 1.20 Release 4;
User's Guide**

Table of Contents

Part I. Getting Started.....	iv
1. Quick Start	1
2. Getting Started	2
WordComplete User's Guide.....	2
Using this Guide	2
What is WordComplete?.....	3
Why do I need WordComplete?	4
Features.....	4
What You Need.....	5
Installing / Un-Installing WordComplete	5
Starting WordComplete	6
Licensing Information	6
License Manager	7
Commonly Asked Questions	11
Customer Support.....	12
Product Catalog	13
Part II. Using WordComplete.....	15
3. WordComplete Operation	16
WordComplete General Operation	16
Keyboard Settings.....	20
Speech Settings.....	22
Appearance Settings	24
Wordlists Settings	25
Word List Assistant	31
Part III. WordComplete Technical Documentation	39
4. Advanced User Notes.....	40
Advanced User Notes & Information.....	40
Final Release Notes	40
WordComplete Files & File Notes & Installation Information	40
WordComplete Initialization File Documentation (WORDCOMPLETE.INI).....	41
Application Notes	46
Windows Developers	47
Customer Suggestions	47
Index.....	49

Part I. Getting Started

General information about this guide, the product, installation, and getting started (how to get WordComplete running).

Chapter 1 - Quick Start contains details on the fastest way to install & begin using WordComplete

Chapter 2 - Getting Started has more information about this guide, WordComplete features, Installing / Un-Installing, Licensing Information, Standard Settings, using WordComplete Setup, Commonly Asked Questions, and information about Customer Support.

Chapter 1. Quick Start

Install WordComplete

- In Windows, insert the CD or DVD - the AutoRun feature will load the Installation Assistant - you may Install a licensed product , Install other product demos, or view Release Information. **If you have a Certificate of Authenticity, enter your License Key, Serial Number, and Name to Install and automatically License.**
- If AutoRun is not enabled:
- In Windows, Click on the Start Button
- Select Run
- Select D:SETUP, or type D:SETUP (or E:SETUP if CD/DVD drive E:, etc.)
- Press (ENTER) or click on OK
- In Windows Vista, you may not have the Run Option - select Computer, your CD/DVD drive, and open Setup
- Answer the questions and follow the instructions on your screen

Note: You may also Un-Install WordComplete by running SETUP.EXE After WordComplete has been properly installed. (WordComplete Setup will ask you if you wish to Un-Install.) This has been provided as a convenience to the user. It is recommended that you use the Control Panel | Add/Remove Programs Icon to remove WordComplete.

Start WordComplete

Click on the Start Button, and open the Start Menu.

Select (All) Programs, then Select WordComplete. WordComplete menu will have selections corresponding to the icons in the group. Select WordComplete to begin operation.

WordComplete will automatically run after install. You may click on the small icon in the tray (near the clock) for WordComplete menu. Refer to the on-line help, and the User's guide for features and capabilities of WordComplete.

Chapter 2. Getting Started

WordComplete User's Guide

Version 1.20 Release 4

11/24/2009

A Utility for Windows

Information in this document is subject to change without notice and does not represent a commitment on the part of Innovation Management Group, Inc. The software described in this document is furnished under a license agreement or nondisclosure agreement. The software and documentation may be used or copied only in accordance with the terms of this agreement. It is against the law to copy the software on any medium except as specifically allowed in the license or nondisclosure agreement. The purchaser may be allowed to make a back-up copy. No part of this manual or guide may be reproduced or transmitted in any form or by any means, electronic or mechanical, including photocopying, recording, or information storage and retrieval systems, for any purpose other than the purchasers personal use, without the express written permission of Innovation Management Group, Inc.

This manual and product represent over 3 years of on-going development, testing, and support. Licensed users of the software are the most important aspect of the entire process that brings this manual and product into existence. Please be respectful of all parties involved.

Trademarks:

Microsoft Windows is a trademark of Microsoft Corporation.

My-T-Mouse[®], My-T-Pen[®], My-T-Touch[®] and My-T-Soft[®] are registered trademarks of Innovation Management Group, Inc.

Copyrights

WordComplete Copyright © 2007-2009 Innovation Management Group, Inc.

WordComplete User's Guide Copyright © 2007-2009 Innovation Management Group, Inc.

All Rights Reserved. Software Subject to Restricted Rights.

Using this Guide

This guide is a comprehensive collection of details, notes, and information about WordComplete. Portions are incorporated within the product itself, and it is also available in various forms (e.g. printed, on-line, PDF, etc.).

Important User Information

This guide is for users who are familiar with Windows, its basic concepts, and how to operate within Windows. If you are not, the information you may need to fully utilize WordComplete and this guide may be limited. You may wish to review Windows help, tutorials, and other available information on using and operating Windows before continuing using this guide.

Conventions used within this guide

Note: Notes and other additional information will be indicated in this way

Warning

Special and other important details to pay close attention to will appear this way

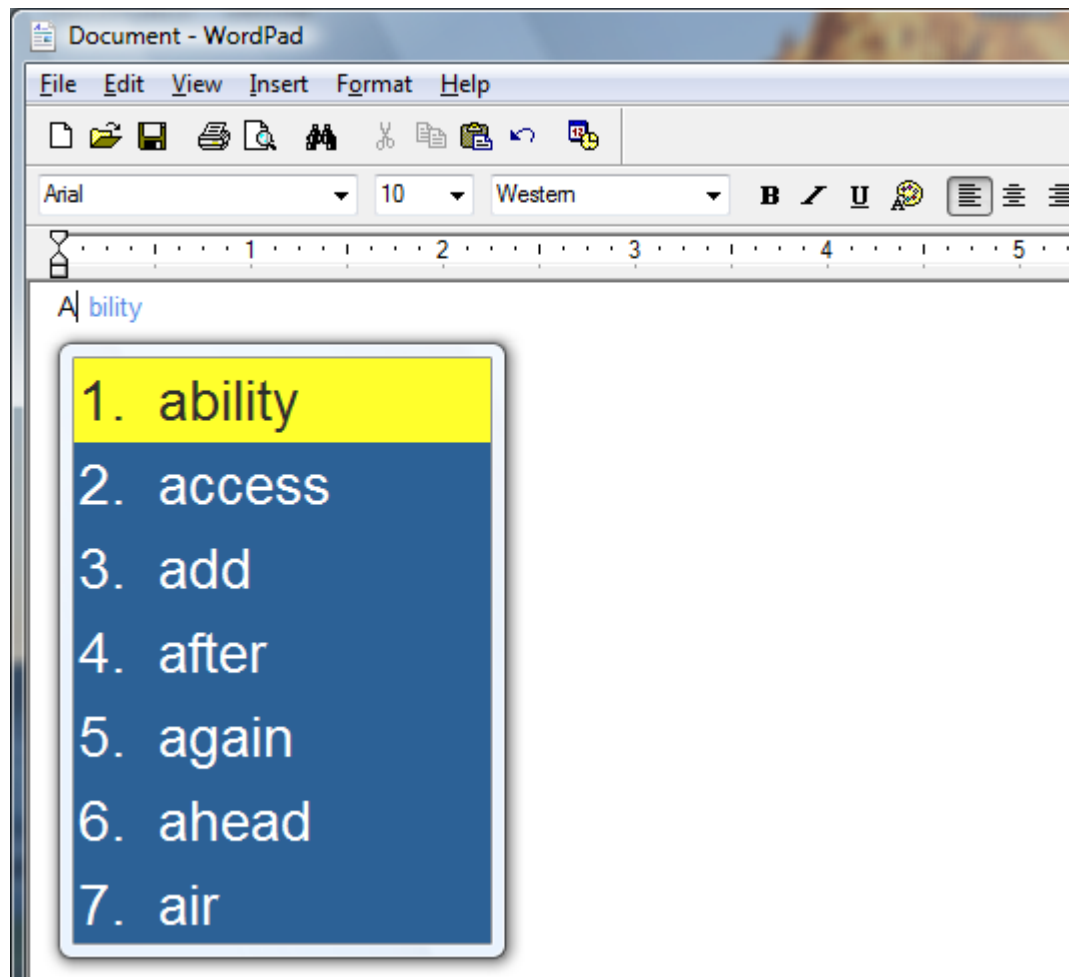
What is WordComplete?

WordComplete is a program that monitors user input, and predicts words as the user types letters. As soon as you type a character, a small window appears which displays a list of possible words or phrases (Word Candidate list). The most frequently used words are displayed first. To further assist this process, an optional second window (inline window) can be displayed, and appears next to the letters that are typed. The inline window shows the most likely WordComplete candidate "inline" (i.e. shows the ending of the word). This visually helps the user see what their completed word would look like, using the most likely WordComplete candidate.

WordComplete provides flexible features to meet the needs of both new and sophisticated users & typists. Word lists can be edited, along with advanced features including word list building and merging tools. WordComplete includes support for sentences and abbreviation expansion. The display list and inline window can be completely customized with colors, separate font selection, and even transparency. WordComplete also provides Text-To-Speech options, which can be used to speak words in the list, speak completed words, and includes other options.

WordComplete is a perfect solution for people with limited hand movement, for anyone trying to increase their typing speed and accuracy, or for those that just want to type with less effort.

WordComplete is invaluable for data entry and quality in industries such as healthcare, science, law, and many other professions. WordComplete also works with Innovation Management Group, Inc.'s My-T-Soft family of virtual on-screen keyboard products.



Why do I need WordComplete?

If you are an inexperienced typist and/or not the greatest speller, WordComplete will greatly improve your typing speed and accuracy. Experienced typists also benefit, because typing with WordComplete requires less keystrokes than normal touch typing. For professions with long words, common phrases, and strict requirements, such as healthcare, real estate, and law, WordComplete can be invaluable. You only need to type the first letter(s) of a word and then select the desired word from the list of predicted words. If working with an on-screen keyboard, the word lookup and completion is a great aid to any text input.

Features

- Large Dictionary (more than 10000 words).
- Multiple Word Lists included.
- Expand or Create new dictionaries quickly and easily with the included Word List Assistant.
- Auto-Learns new words as you type.
- Can predict words and phrases.

- Easy interface for modifying existing dictionaries or creating new ones.
- Works in any language.
- Extremely customizable Word Completion candidate window (font, background, size, etc.).
- Displays inline most likely WordComplete candidate.
- Choice of horizontal or vertical word list window.
- Select words with number keys (0-9), Enter, Space or Tab key.
- Select words with mouse.
- Automatic resizing based on how many words are predicted.
- Optional Transparent windows.
- Text-To-Speech capabilities (speak the selection, all words, or after word completion).
- Easy to undo the auto completed word.
- Automatically adds a space after auto completing word, or after punctuation characters.
- Shorthand expressions (abbreviations) expansion support.
- Full sentence support.
- Can be configured for "read-only" word list operation.
- USB Device operation supported.
- End-user and Developer Support.

What You Need

To run WordComplete you need the following equipment (hardware requirements):

- IBM 80386 or higher or compatible
- 25 mb hard disk space available
- 128 mb memory or higher
- Windows 2000 / XP / Vista / 7
- VGA or SVGA recommended
- Any Windows supported pointing device

Installing / Un-Installing WordComplete

- In Windows, insert the CD or DVD - the AutoRun feature will load the Installation Assistant - you may Install a licensed product , Install other product demos, or view Release Information. **If you have a Certificate of Authenticity, enter your License Key, Serial Number, and Name to Install and automatically License.**
- If AutoRun is not enabled:
- In Windows, Click on the Start Button
- Select Run

- Select D:SETUP, or type D:SETUP (or E:SETUP if CD / DVD drive E:, etc.)
- Press [Enter] or click on OK
- In Windows Vista, you may not have the Run Option - select Computer, your CD/DVD drive, and open Setup
- Answer the questions and follow the instructions on your screen

Note: You may also Un-Install WordComplete by running SETUP.EXE After WordComplete has been properly installed. (WordComplete Setup will ask you if you wish to Un-Install.) This has been provided as a convenience to the user. It is recommended that you use the Control Panel | Add/Remove Programs Icon to remove WordComplete.

Starting WordComplete

Click on the Start Button, and open the Start Menu. Select (All) Programs, then Select WordComplete. WordComplete menu will have selections corresponding to the icons in the group. Select WordComplete to begin operation.

The following icons will also be available in WordComplete group:

WordComplete - runs WordComplete

WordComplete Help - opens WordComplete Help (opens this document)

Licensing Information - Displays current license status of WordComplete, allows instant licensing

Check for Updates - uses the internet to check IMG's website for any WordComplete updates or options

Refer to WordComplete Operation Notes for a quick overview of WordComplete.

Licensing Information

WordComplete uses the IMG License Manager to manage the licensed use of this product. If unlicensed, the product will run as demo (i.e. a demonstration version). In the demo (unlicensed) mode, WordComplete will run for about an hour, and then exit, displaying the license manager (announcing that it is unlicensed). You may restart WordComplete up to 100 times (the demonstration period limit). After the demonstration period is over, WordComplete will not operate unless it is licensed. For extended evaluation and testing purposes, please contact IMG Customer Service for an evaluation license. Once licensed, the operation will not be limited in any way.

The most common methods of licensing are electronic (web/e-mail based) and by certificate (Certificate of Authenticity). In both cases, there will be a registered serial number, and a license key made available once a license has been purchased - these need to be entered into the IMG License Manager to activate a valid license. For further details, refer to the IMG License Manager. There is also USB storage device licensing, so WordComplete can be run from the USB device, simply by inserting the licensed device into any system.

Note: There are numerous license schemes (including OEM, site, & enterprise licenses) available to meet the needs of all our customers. If you have any licensing questions, please contact Innovation Management Group, Inc. directly.

License Manager

In order to License WordComplete, the correct License Key and Serial Number must be entered into the IMG License Manager, along with some text for the Customer (and optional Company) text areas. The License Key and Serial Number can be found on the Certificate of Authenticity, or in the Software Unlock Codes e-mail.

WordComplete License Manager - Authentication

IMG License Manager - Authentication

License Information - Version 1.20.24242
 This product is locked in Demo mode. To unlock, register, and license this product, a registered Serial #, License Key and Customer Name must be entered. Please enter the information from your Certificate of Authenticity. To purchase a License, click on the Purchase License Now button (Internet connection required).

Information to provide with Payment
 System ID: D120-1AD5-A5F3-A022

The System ID is required for proper licensing! It is important that the System ID be obtained from the already installed software. Click on Purchase License Now (above) to use this System ID.

Enter Unlock Codes
 (Sent after payment approved)

License Key:
 Serial No.:
 Customer:
 Company:

Contacting Innovation Management Group, Inc. & License Information
 World Wide Web: <http://www.imgpresents.com/order.htm>
 E-mail: order@imgpresents.com
 USA & Canada (Toll Free): 1-800-889-0987

The License Key and Serial No. entries are a matched pair, and will work together to unlock the software. The Customer entry is required (i.e. some text must be entered in the Customer text area), but is not part of the license unlock process. The Company text area is optional, and will be shown as the Source when the product is licensed.

To quickly and easily license the software (on a system that has internet access), simply click on the "Purchase License Now" button. Once connected to IMG's website, you will be asked to enter billing information and payment information. Once paid, your order will be processed, and you will receive a confirmation e-mail and a separate e-mail with license information. Once the order is fully processed, you can then click the "Retrieve Purchased License" button to automatically license your system.

System ID Note: The System ID is used to accurately match the Product and Version you wish to license with the License Information provided. If the system you wish to License does not have Internet Access, you can use the Copy System ID to Clipboard to accurately copy the System ID to the clipboard (which can be saved in a text file or other document and moved to a system that does have Internet Access).

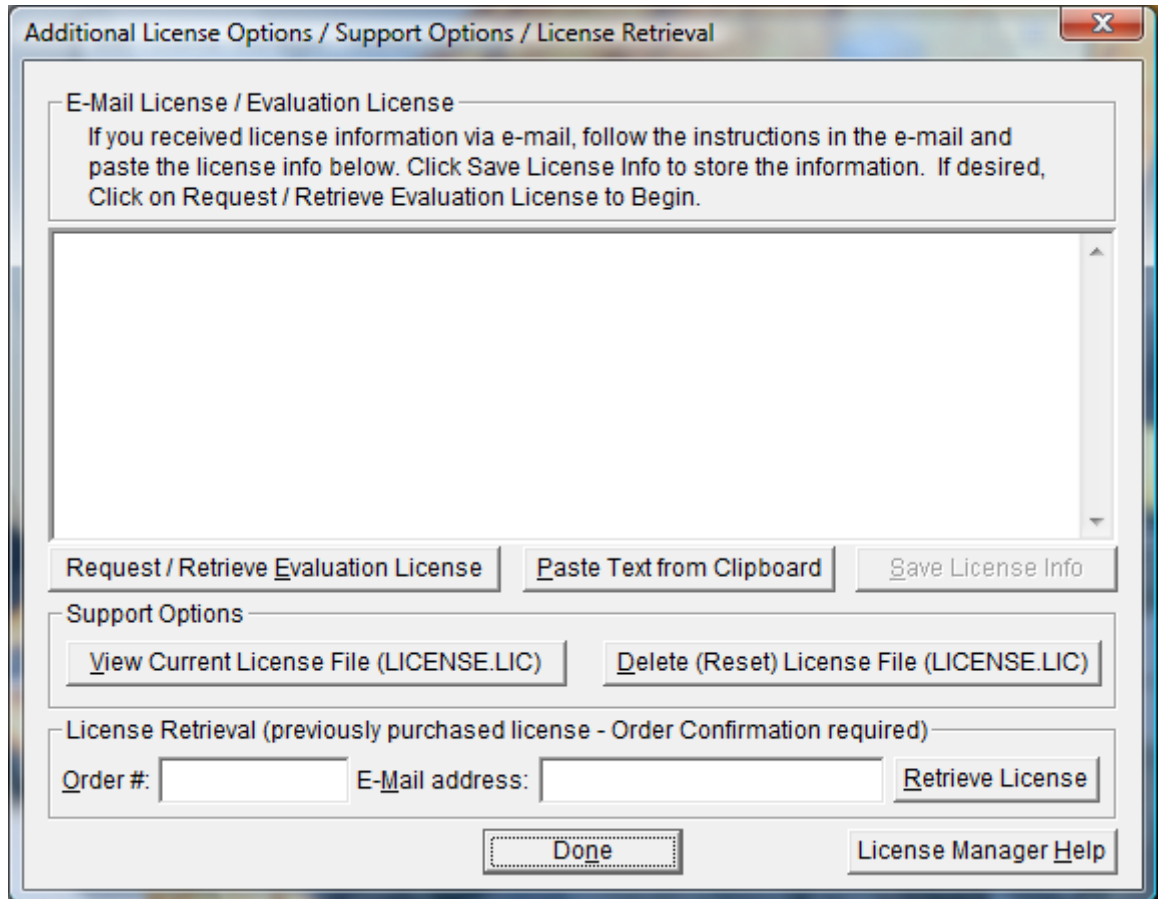
Note: The "Retrieve Purchased License" uses a unique identifier to automatically license your system (which is only sent if the "Purchase License Now" is used). If you try this on a different system, or after a system update or re-install (or after a change to this unique ID), the software will not license automatically. You will either need to enter the License Key and Serial Number, or go into Additional License Options (see below) and use your Order Confirmation Number and Order E-mail to retrieve the license.

Important Note: Be sure to save and/or print your Order Confirmation number (with Order E-mail), along with your License Key and Serial Number in case you need to re-license the software in the future (Operating System Re-install, hard disk reformat, new system, etc.)

Certificate of Authenticity Note: For Electronic Licenses, and Certificate of Authenticity can be retrieved on IMG's website: <https://www.imgpresents.com/orders/account/licmanager.htm>. This requires a valid License Key and Serial Number. Once entered, you may view a PDF of the Certificate, or download the Certificate of Authenticity PDF file (for printing or saving).

WordComplete License Manager - Additional License

Options



The Additional License Options section has tools and options to Enter or Paste Evaluation or Other License Information; Request and Retrieve Evaluation Licenses; Support Options to View and Delete (Reset) the License file; and a mechanism to retrieve a Purchased License by entering the Order Confirmation Number and the Order E-mail address.

Often, interested parties want to review or test the software without the demonstration license limitations, and to accommodate this, IMG makes available Evaluation Licenses. These Evaluation Licenses are fully functional licenses, but with a date limit (when the evaluation date has passed, the software will return back to the Unlicensed, Demonstration mode).

Evaluation Licenses may be requested at the Product Download pages on the website, or by using the Request / Retrieve Evaluation License button here. Note that all Evaluation License requests are reviewed, and Evaluation Licenses must be created by IMG personnel (generation is not automated).

An Evaluation License sent via e-mail contains a block of text that has the license details for the License Manager. When sent via e-mail, the text can be copied and subsequently pasted into the text area here (Paste Text from Clipboard), then saved to enable (set) the License Information (Save License Info).

Alternatively, if an Evaluation License is Requested, then after processing, it may be automatically Retrieved directly by clicking the Request / Retrieve Evaluation License button. Please refer to any additional information provided by the messages shown when using this approach.

The View Current License File (LICENSE.LIC) button will load the file LICENSE.LIC from the installation folder. This file contains the actual license information for the product, or the license

information used to validate a License Key and Serial Number.

Note: Because an Evaluation License uses this same file, the Delete (Reset) option should be used if Licensing the product after using an Evaluation License.

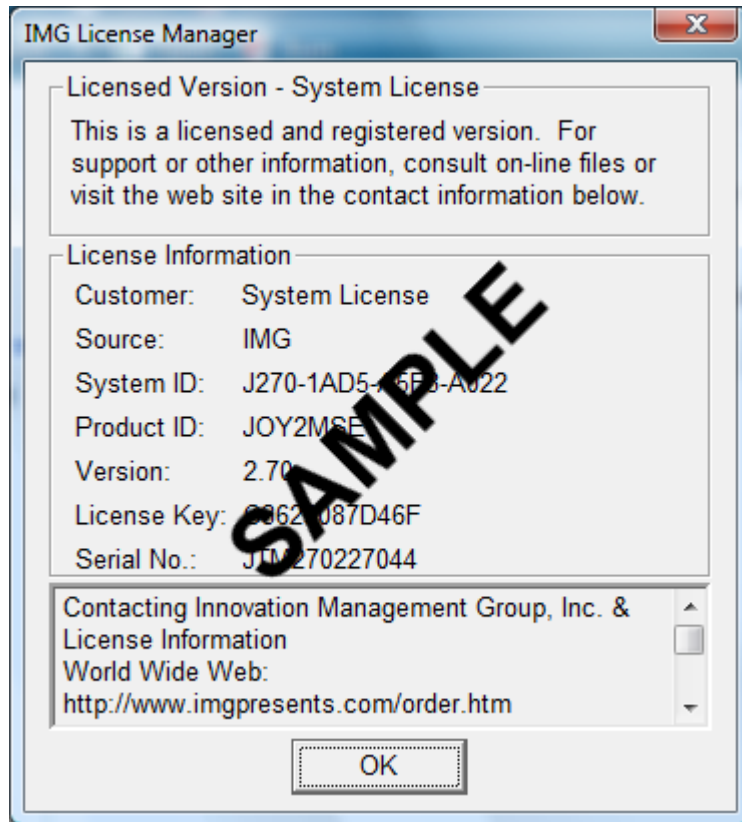
The Delete (Reset) License File (LICENSE.LIC) will remove the existing LICENSE.LIC, then copy the file LICENSE.ORG to LICENSE.LIC (both in the installation folder). The file LICENSE.ORG is the "as shipped" license file, and should be the License File when using a License Key and Serial Number to license the software.

Note: For License Purposes, using the Support Option to Delete (Reset) the License File is essentially the same as un-installing, then re-installing the software. Because this option is quicker and simpler, it is the preferred approach to resolve any license issues. Note that manually copying the file LICENSE.ORG to LICENSE.LIC (in the installation folder) performs the same operation as this option.

The License Retrieval Option will retrieve License Information from IMG's Website for electronically purchased licenses. The Order Confirmation Number and Order E-mail is required (which appear on the Order Confirmation page provided after successfully placing an on-line order, and are provided separately via an Order Confirmation E-mail).

Note: For Retrieved Licenses (via Retrieve Purchased License, and via the Retrieve License Support Option), License Key and Serial Number information is processed exactly as if this information was directly entered in the Authentication area. Therefore, all issues that may affect licensing also apply to these automated options (e.g. License File status, User permissions, etc.)

WordComplete License Manager - Licensed Display



When properly Licensed, a screen similar to this will show the License Information for the product. The display of this indicates that the software is Licensed.

Note: Evaluation licenses also show this screen during the days that the Evaluation License is valid.

Commonly Asked Questions

Compatibility

1. Does WordComplete work with all Windows Applications?

Yes.

Display

2. The list of predicted words does not show after I start typing. Why not?

Check if the program is enabled. Right click the system tray icon and click on enable.

3. Why is the list of predicted words horizontal?

This is a user option. Right click on the system tray icon, click on settings and then select the Appearance tab. In the Word List section uncheck "Use horizontal list" option.

4. Can I make the Word List candidates window transparent?

Yes. Right click on the system tray icon, click on settings and then select the Appearance tab and adjust the transparency level of the list or the inline auto complete.

5. Can I change the font or the background of the predicted words window?

Yes. Right click on the system tray icon, click on settings and then select the Appearance tab and adjust them to your liking.

WordComplete Operation

6. How do I type a word from the list of predicted words?

There are three ways to type the desired word. Use the number keys (0-9) to select the corresponding word from the list. Double-click left on the word with the mouse (or with the Single click option enabled, a single-click left). Use the arrow keys to select the word and then press [Enter], [Tab] or [Space] (depending on which one is selected in the setup).

7. Can I manually add/delete words from the dictionary?

Yes. Right click on a word from the list of predicted words and click delete. Or for more options open the settings dialog and click on the Wordlists tab.

8. Can the program complete phrases?

Yes. However you need to manually enter them in the Dictionary. Refer to WordComplete Wordlists settings for more information.

9. Does the program support shorthand expressions (abbreviations)?

Yes. Refer to WordComplete Wordlists settings for more information.

10. Can the program speak the predicted words for me?

Yes. There are three options. Speak the selected word, speak all predicted words (entire list), or after auto complete (word selection).

Customer Support

WordComplete Software is backed by a support staff trained to provide you with fast, courteous service. Over the years, IMG has astounded individuals at the quality of its software and its support. So that we can continue to focus our resources on development and providing high-quality products & support, we do appreciate your assistance in reviewing the help, manual, and support information available at our website to see if the problem or question has already been addressed. However, if you need assistance beyond what the manual, tutorial, help files, and on-line support database provide, please contact IMG Customer Service:

Innovation Management Group, Inc.
Customer Service
179 Niblick Road #454
Paso Robles, CA 93446
USA
(800) 889-0987 (US & Canada)
(818) 701-1579
(818) 936-0200 (fax)
<cs@imgpresents.com>
<http://www.imgpresents.com>

To open a Technical Support case and create a support ticket, please refer to <https://www.imgpresents.com/orders/support/techsupport.htm>.

Please provide, or have the following information ready when you ask for assistance:

- WordComplete version number, update level.
- Registered serial number (or if running demo)
- Make and Model of your computer.
- Windows version number, any Service Packs or major updates.
- A description of the problem.
- If possible, a list of the steps required to recreate the problem.
- If you have seen an error code, record and report the number.
- Additional information may be required, such as monitor type, type of pointing device, amount of RAM in your system, other software running (anti-virus, spyware, virtual machine, etc.).

Product Catalog

Innovation Management Group, Inc.'s Products

Commercial Division Products...

Indestructible Keyboards & Indispensable Utilities!

My-T-Soft® Build-A-Board

The Ultimate Tool for creating and modifying On-Screen Keyboards, buttons, and Panels. My-T-Soft Family, plus Cross-Platform Support

My-T-Pen® for Windows

On-Screen Keyboards & Utilities for Pen Based Systems

My-T-Touch® for Windows

On-Screen Keyboards & Utilities for Touchscreens

My-T-Soft® for Windows

On-Screen Keyboards & Utilities for any pointing device

My-T-Soft® TS for Terminal Services

On-Screen Keyboards for Terminal Server / Terminal Services

TouchRight Utilities

Right Click Access for Pens & Touchscreens

Assistive Technology Division Products...

Enabling Tools for Special Needs

AT Accessibility Suite

IMG's Assistive Technology Software with site license options

Joystick-To-Mouse

The Software That Lets You Run Windows With A Joystick!

My-T-Mouse®

The Software That Makes Your Mouse a Mouse That Types! Indispensable & Utilities for any Mouse or Trackball

OnScreen

Special Features for disabled & impaired users Word Prediction / Word Completion / Window Control / Scanning

OnScreen with CrossScanner

Complete control of Windows from a single switch! Support for Keyboard, Mouse, Joystick interfaces

SmartClick

Operate Windows without the need to Press/Click a Button

The Magnifier

Area and Full Screen Magnifier, Cursor Locator, Visual Aids

WordComplete

Word Completion, adaptive word prediction, Word List Management, etc. Type Better, Type Less - we do the rest!

For further information...

Contact your Local Software Dealer

or

Innovation Management Group, Inc.
179 Niblick Road #454
Paso Robles, CA 93446
USA
(800) 889-0987 (US & Canada)
(818) 701-1579
(818) 936-0200 (fax)
<csimgpresents.com>
<http://www.imgpresents.com>
<http://www.my-t-mouse.com>
<http://www.my-t-pen.com>
<http://www.my-t-soft.com>
<http://www.my-t-touch.com>
<http://www.onscreen-keyboard.com>
<http://www.build-a-board.com>
<http://www.joystick-to-mouse.com>
<http://www.themagnifier.us>

For International Contacts, please see Web Site...

My-T-Mouse®, My-T-Pen®, My-T-Touch® and My-T-Soft® are registered trademarks of Innovation Management Group, Inc.

Part II. Using WordComplete

Description of how to operate and configure WordComplete.

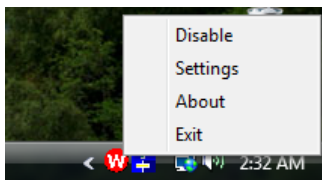
Description of how to operate and configure WordComplete.

Chapter 3 - WordComplete Operation contains basic operation notes, and details on user settings and options.

Chapter 3. WordComplete Operation

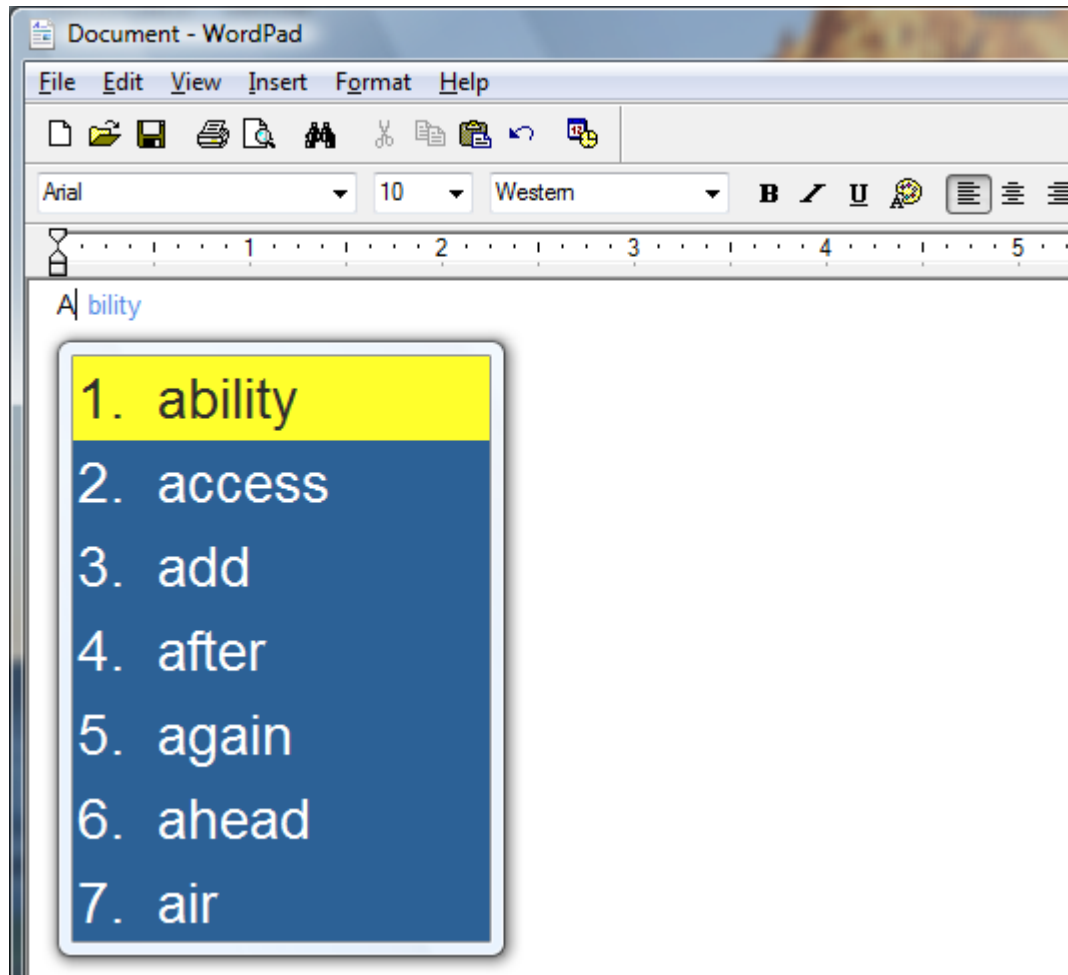
WordComplete General Operation

After you start the program, a small icon appears in the system tray. By right-clicking on the WordComplete icon you can access a menu where you can quickly enable or disable WordComplete. Within Settings, you can access all of the program options. About shows release information and identifies the location where settings are saved. Finally, Exit will close WordComplete.



WordComplete works by monitoring the user input, and predicts what the user typing by using an adaptive, frequency sorted list based on the characters typed. As soon as you type a character, a Word List candidate list window appears, which displays a list of possible words or phrases. The most frequently used words are displayed at the top. To further assist this process, a second window (inline window) can be displayed next to the word being typed. The inline window shows the end of the word (most likely candidate) inline (the predicted end of the word).

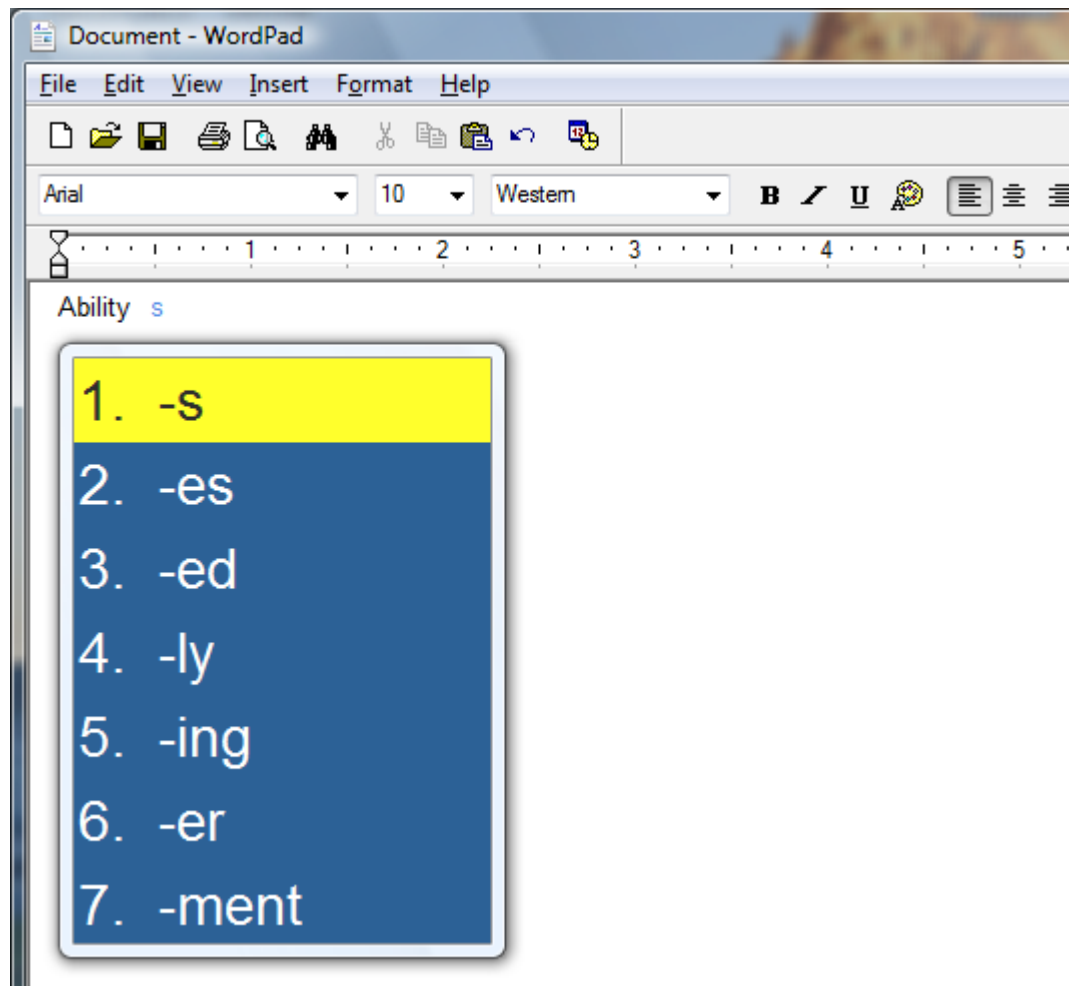
Start typing in any windows application that accepts user input. You will see the list of predicted words, and the inline display of the most likely candidate (if enabled).



If the word that you are trying to type is not in the list, just continue typing the next letter. The list displaying the word candidates will change (the possible word candidates will get narrowed down, since now WordComplete has more information to identify the word), and hopefully the desired word will now be in the list.

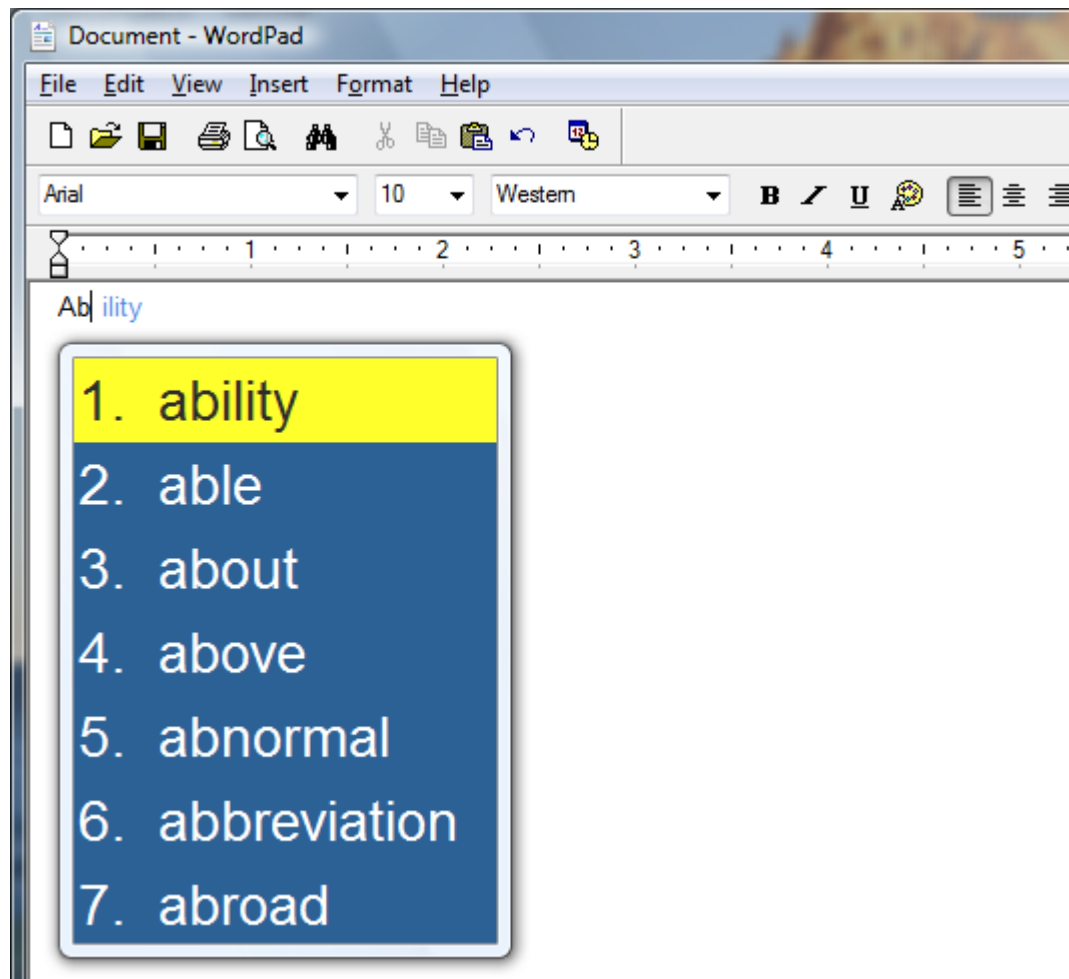
To type a word shown in the Word List Candidate window, do one of the following:

- Use the Number keys (1 - 9) to select the corresponding word from the listbox.
- Select a word either with the arrow keys, or with the mouse and press [Enter], [Tab] or [Space] (Depending on the complete method selected).
- Double-click a word from the list with mouse (or single-click if enabled).
- Double-click the inline window.



To reduce the number of word candidates, suffixes are not displayed initially, only after you auto-complete a word. After a word is completed, a list of suffixes is displayed (if enabled in WordLists Settings), and can be selected and used the same way as above. Suffixes automatically remove auto-spacing, and built-in suffix rules are used (i.e. remove e if suffix is -ed).

If you make a mistake, there are two ways to undo the last auto-completed word. If you press the Escape key, you will go back to the position where you were right before you auto-completed the word. You can also use the Backspace key which will undo character by character up to the beginning of the word. In both cases the Word List Candidate window is updated everytime you undo an auto-completed word. Just try it and you will understand immediately how it works.



WordComplete will automatically learn as you type, and display the most frequently used words on the top of the list of word candidates, and also add any new words you type to the dictionary if they are not already there. For more information on how to manually add, edit or delete words from the dictionary refer to the Wordlist Settings section.

WordComplete can speak the word(s) from the list of predicted words for you. By default the currently selected word from the list of word candidates is spoken. It is also possible to speak the whole list. Refer to the Speech Settings section for more information.

For better integration, and to reduce clutter, the window that displays the predicted words is visible only when the word that you are trying to type is in the dictionary.

WordComplete has 2 keyboard shortcuts (hot keys):

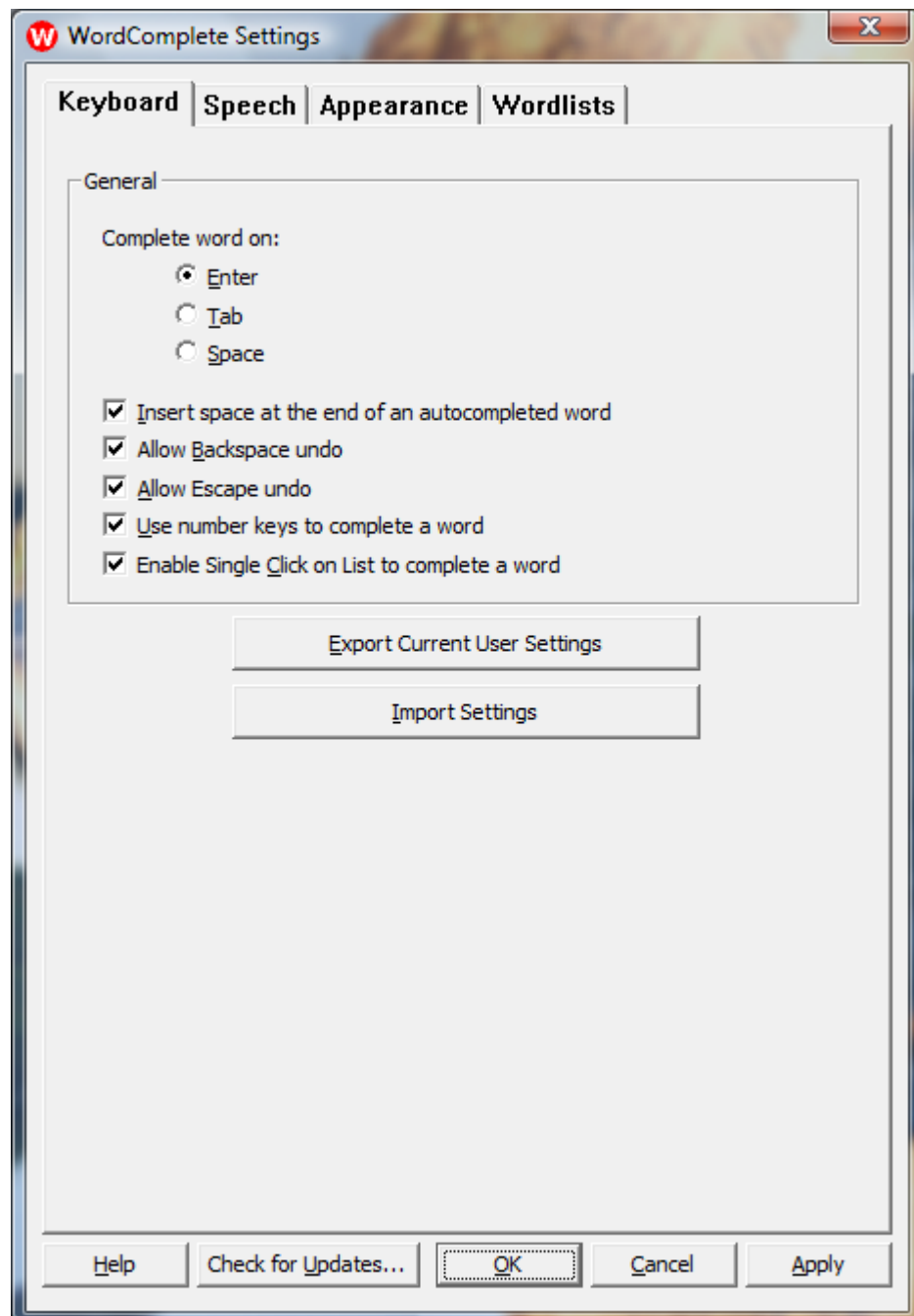
- **Alt-X** toggles WordComplete activation (Enable/Disable) - this is a keyboard shortcut to this option on the menu (available from the WordComplete icon in the system tray).
- **Alt-W** opens the settings/options dialog - this is a keyboard shortcut to the Settings option on the menu (available from the WordComplete icon in the system tray).

Warning

When working with WordComplete, both the keyboard and the mouse can perform various functions. Because the Word List Candidate window moves along as you type, it is important that you be aware where your mouse is located. It is possible that the mouse may cause problems by highlighting a selection while you are typing, as the Word List Candidate moves under the mouse position. For best results, it is recommended you move the mouse off the window you are typing into. This prevents any conflict from the mouse changing a selection in the Word List Candidate window while you are typing.

WordComplete works with any Windows application.

Keyboard Settings



Complete word on - Select which key to use to perform the auto-completion. There are three choices: [Enter], [Tab], or [Space].

Insert space at the end of an autocompleted word- After you auto-complete a word, a space will be automatically added.

Note: Space added after punctuation characters like . , ! and ? . are not affected by this setting. You have to manually edit the configuration WordComplete.ini file to change these character sequences.

Allow Backspace undo - After you complete a word, pressing the backspace will bring up the list with word suggestions again. With each backspace (up to the beginning of word) the list will update

with new words, and become more and more general, since you are deleting characters from the word which increases the candidate list.

Allow Escape undo - After you complete a word, pressing the Escape key will undo the auto-completion that you just did, go back to the position where you were right before you auto-completed the word, and show the Word List candidate window.

Use number keys to complete a word - Select if you want to be able to auto-complete a word by using the number keys from the keyboard (Number 1 will be the first word from the list, 2 - the second and so on, as indicated in the Word List candidate window).

Enable Single Click on List to complete a word - Select if you want to be able to auto-complete a word by single-clicking with the left-button on the mouse in the Word List candidate window. When displayed, you can select by double-clicking with the mouse on a word. With this option enabled, a single left-click will select and complete the word.

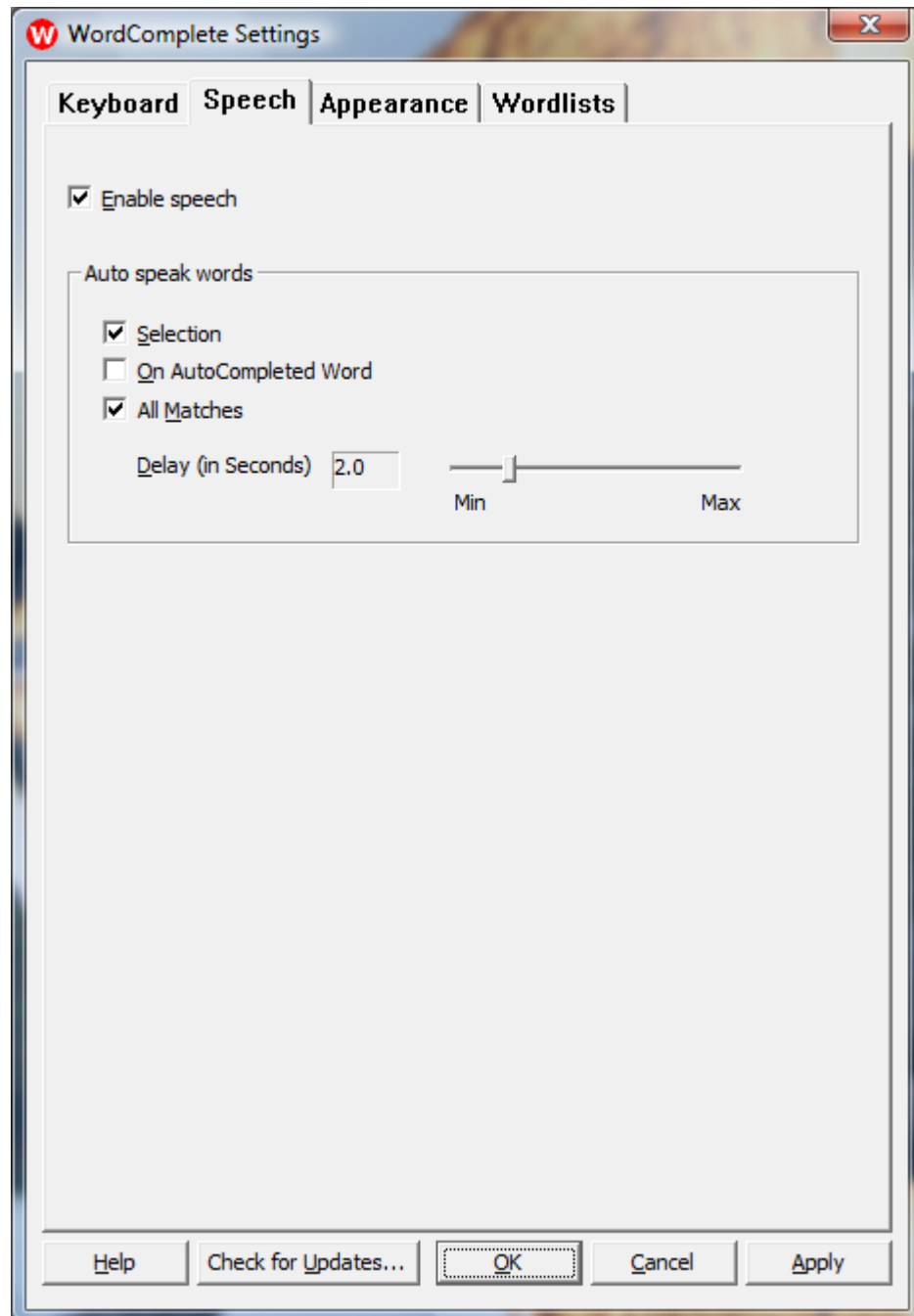
Export Current User Settings - This will take the current user's settings and word lists and compress and save them on the Desktop as a "WordComplete_Settings.zip" file. This allows users to transfer settings from one system to another. If multiple exports are done, each file name will change by adding a "+" symbol to the export file name. For exact location of a user's settings, refer to the About information (available via the taskbar tray icon menu).

Import Settings - This will use a previously exported "WordComplete_Settings.zip" file and overwrite and replace the settings and word lists for the current user. To perform this operation, WordComplete will be closed (if OK is accepted when warned), then a File Selection window will be opened to select a "WordComplete??_Settings.zip" file. If selected, and the operation confirmed, the current user's existing settings will be overwritten and be replaced with the settings contained within the selected file. For exact location of a user's settings, refer to the About information (available via the taskbar tray icon menu).

General Options available at all Settings pages

- **Help** - This will open this help file to the appropriate section for the page you are on.
- **Check for Updates...** - This will use the IMG Download Manager to check for any updates
- **OK** - This will accept and apply all changes made, and close the Settings pages
- **Cancel** - This will cancel and disregard any changes made, and close the Settings pages
- **Apply** - This will accept and apply all changes made and update WordComplete without closing the Settings pages

Speech Settings



Enable speech - Turns on or off the speech capabilities. This option might not be available if your computer does not have sound capabilities or the correct speech software is not installed. See Text-To-Speech notes in the Application Notes section for further details.

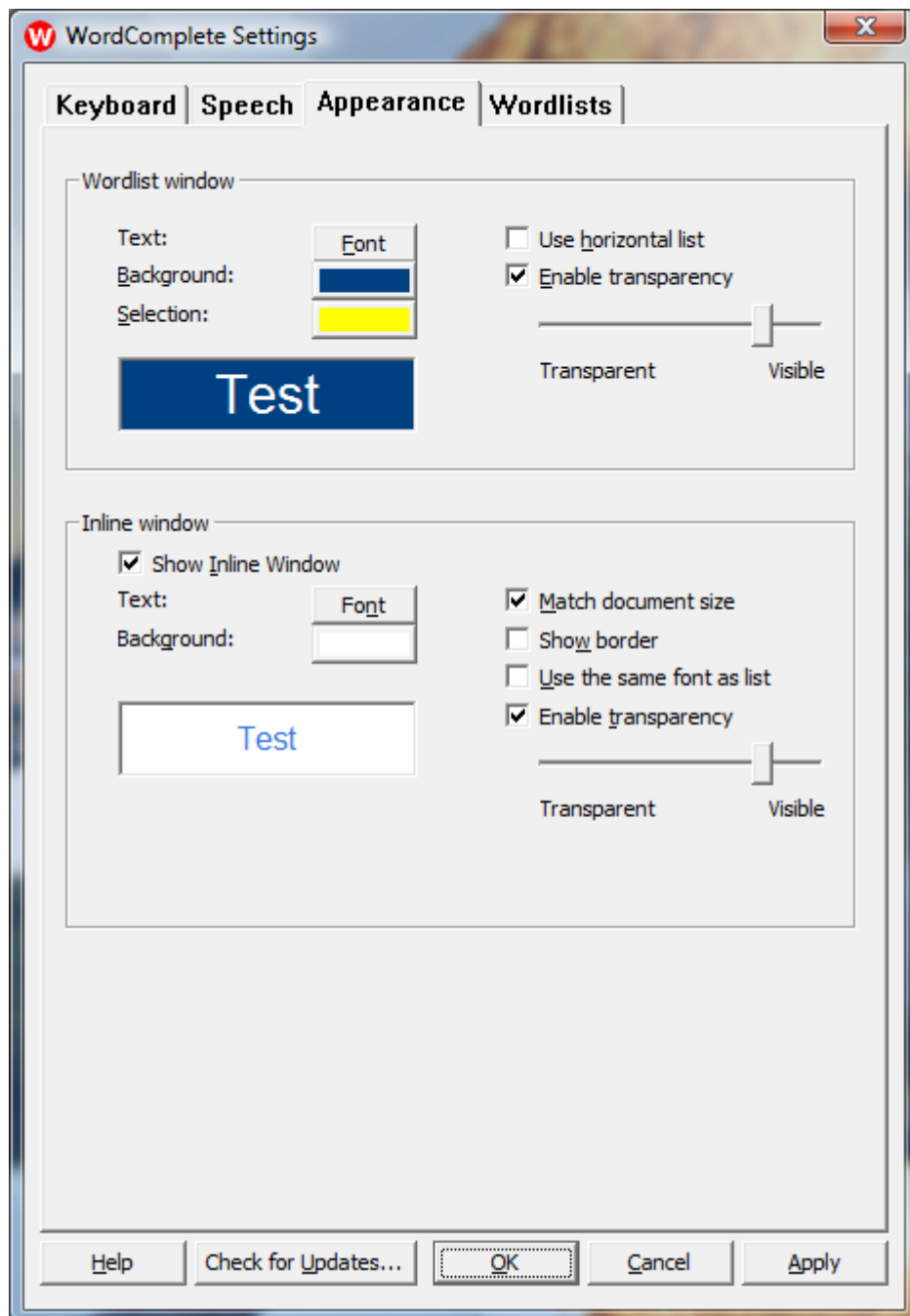
Auto speak words

Selection - WordComplete will speak the currently selected word from the list of word candidates. The first word from the Word List candidate window is selected by default on each new character typed, so it will be spoken. If you select with the arrow keys or the mouse, the word will be spoken.

On auto-completed word - WordComplete will speak the word after it is auto-completed.

All matches - WordComplete will speak all the words from the list of word candidates. Use the slider to adjust the delay between each word spoken.

Appearance Settings



Word List:

Text: - Lets you choose the font for text of the words displayed in the list of predicted words. You can also select the Text color in the Font dialog.

Background - Lets you choose the background color of the window that shows the list of predicted words.

Selection - Lets you choose the background color of the current selection in the list of predicted words.

Use horizontal list - Check this to make the list of word candidates horizontal, rather than vertical. Uncheck to make it vertical.

Enable transparency - Makes the Word List candidate window transparent. Use the slider to adjust the level of transparency.

Inline Window:

Show inline window - Lets you toggle the inline window on or off. When unchecked, none of the other options for the inline window are available.

Text: - Lets you choose the font for text of the word displayed in the inline window. You can also select the Text color in the Font dialog.

Background - Lets you choose the background color of the inline window.

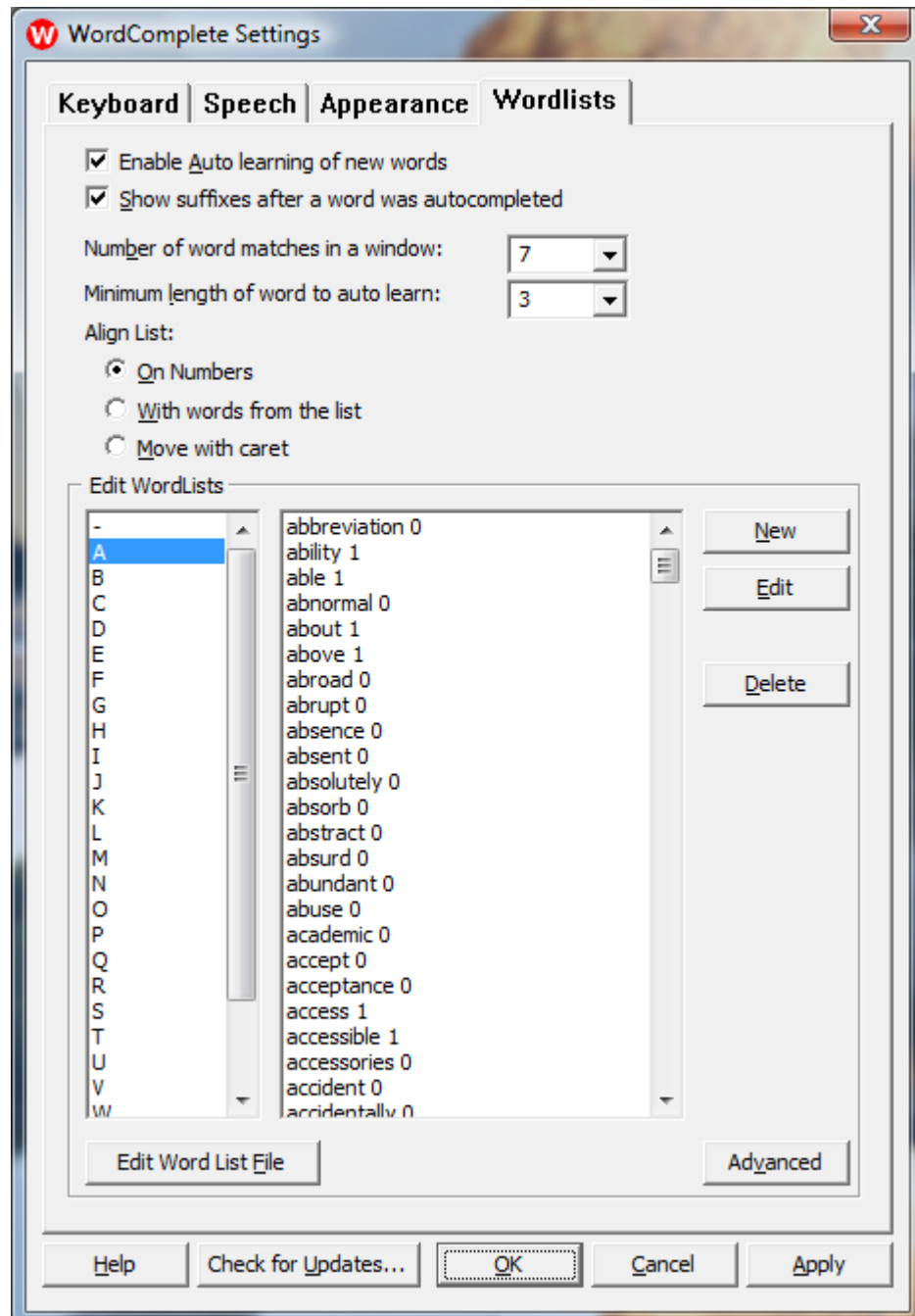
Match document size - Will try to make the size of the text of the inline window the same as the program you are typing in. Because the size of the text caret can vary from the actual font used in the application, this may not match the size exactly.

Show Border - Draws a border around the inline window.

Use the same font as list - Makes the font of the inline window the same size as the font of the Word List Candidates window.

Enable transparency - Makes the inline window transparent. Use the slider to adjust the level of transparency.

Wordlists Settings



Enable Auto learning of new words - Lets you choose if you want new words to be added automatically to the dictionary, and the frequency count of existing words to be updated, so that they show at the top of the word candidates list.

Show suffixes after a word was autocompleted - Right after you auto-complete a word, the suffixes window will be displayed, where you can select a suffix to be added to the word. You do not have to worry about adding spaces, it is done automatically. If you do not need to add a suffix you can just start typing a new word. There are certain built in rules for -ed and words ending in e, and -es with words ending in y.

Number of word matches in a window - Adjusts the maximum number of words that will be displayed in the list of word candidates. The list resizes itself automatically based on the number of word matches. So even if you set the maximum number of word matches to 9 the list may display less words if there are not enough words in the dictionary that match what you typed.

Note: There is a maximum of 18 candidates that will be pulled from the dictionary for any character sequence. You can scroll the Word List Candidates window by using the arrow keys (i.e. scroll down to see past the currently displayed list (if there are more words provided from the dictionary based on the current lookup character sequence)).

Minimum length of word to learn - Select how long the word must be that was typed in order to be automatically added to the dictionary.

Align list - Aligns the Word List candidates window either with the numbers, the beginning of the words from the list, or moves the window with the caret as you type.

Edit wordlists

The list on the left displays all of the available wordlists. Selecting one of them will display all the words from it in the right window.

To add new word - Click on the New button. A new window will open where you can type the word you want added to the dictionary, and the frequency (high frequency means the word will show on top of the list of predicted words) of that word.

To edit a word - Select the word and click on the Edit button. A new window will open where you can type the word you want added to the dictionary, and the frequency of that word.

To delete a word - Select the word and click on the Delete button. This operation cannot be undone.

Note: The suffixes list cannot only be edited using the "Edit Word List File" option. This list is not automatically sorted or updated with frequency, so the suffix list is displayed based on the text file itself.

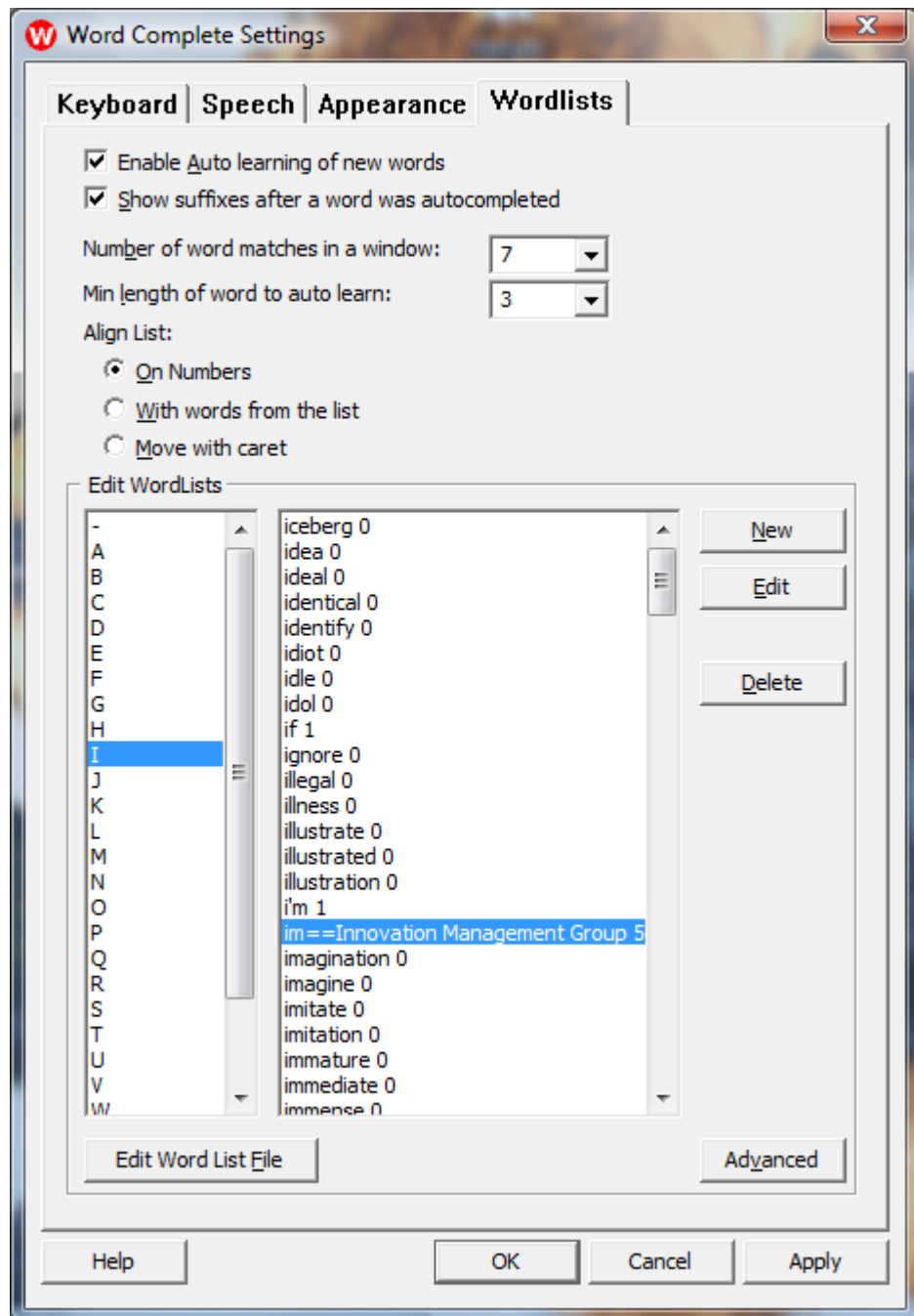
Edit Word List File - To open a wordlist file directly in an Editor (Notepad), select a wordlist from the leftmost pane and click the "Edit Word List File" button.

Note: You can also add shorthand (abbreviation) expressions to the dictionary. Use the following format:

abr==Expansion - where "abr" is an abbreviation (up to 3 characters) and the "Expansion" is what you want to be entered when the abbreviation is typed and selected (can be a single word or a phrase).

To create an abbreviation / expansion entry, click on the "New" button and enter the abbreviation, then the double equal (==), followed by the expansion.

After you add the properly formed abbreviation and expansion to the dictionary (see above how to add words to the dictionary), once you start typing the abbreviation, you will see your shorthand expansion in the Word Candidates list preceded by ==.



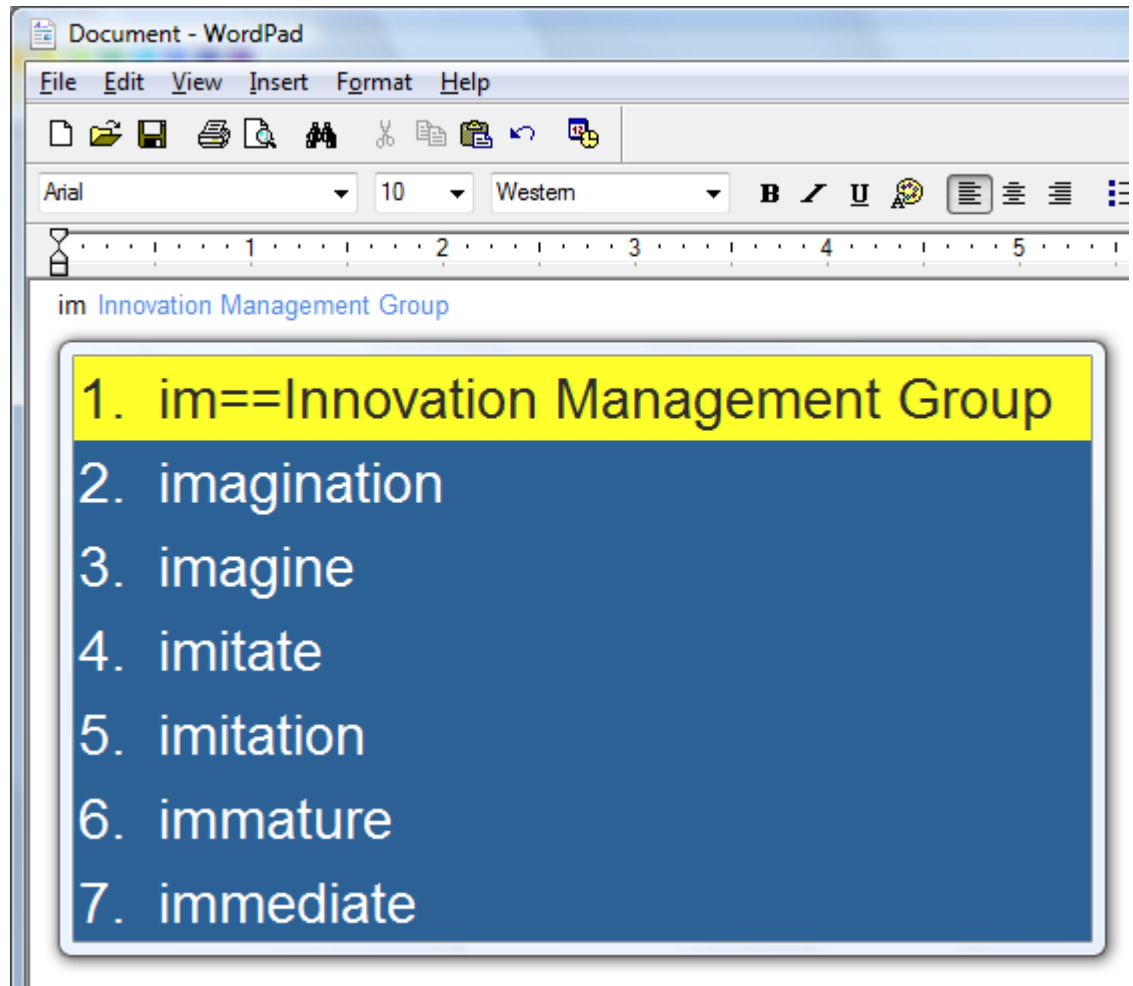
For capital letters, you need to edit the word list file directly. Select the letter of the list, then click on the "Edit Word List File" button to open the text editor (Notepad).

```

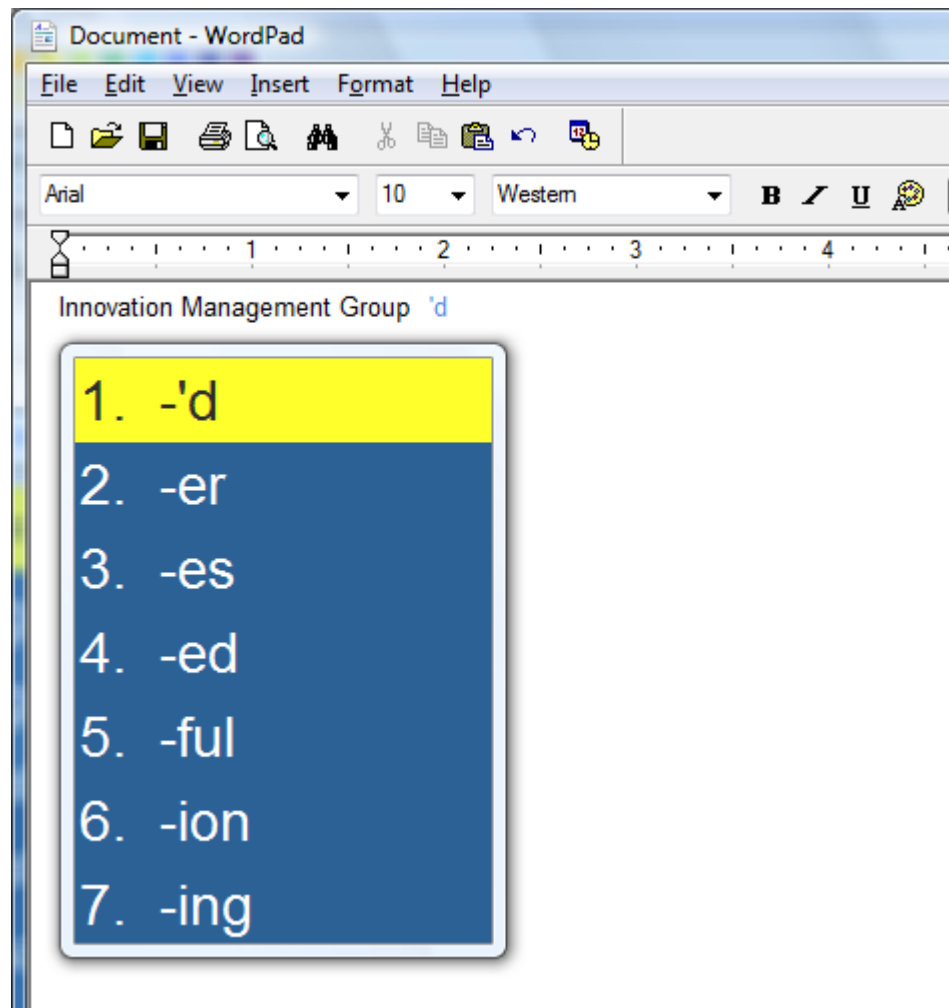
I.TXT - Notepad
File Edit Format View Help
LEAVE THIS SECTION ALONE!
1 1 0 0 0 0 2 2 3 9 0 0 10 10 11 11 0 0 0 0 0 0 0 12 16 17 40 41
-----
iceberg 0
ideal 0
identical 0
identify 0
idiot 0
idle 0
idol 0
idea 0
if 1
ignore 0
illness 0
illustrate 0
illustrated 0
illustration 0
illegal 0
i'm 1
im==Innovation Management Group 5
imagination 0
imagine 0
imitate 0
imitation 0
immature 0
immediate 0
immense 0
impatient 0
imperative 0
implement 0
imply 0
impolite 0
import 0
importance 0
important 0
impose 0
impossible 0
impress 0
impression 0
imprint 0
improper 0
improve 0
improvement 0
impulse 0
in 1

```

When typing, your abbreviation will appear in the word list, sorted with other words. In practice, just typing the abbreviation and then typing the selection key ([Enter], [Space], or [Tab]) will type the abbreviation expansion.



This is the result of typing "im[Enter]" - a lot of typing saved!



Advanced - For advanced word list options, like merging word lists, creating a word list from a file, and other word list options, click on the Advanced button. For more details, refer to the Word List Assistant section.

Word List Assistant

What is Word List Assistant?

WordComplete uses multiple sorted text files with frequency counts to identify word completion candidates. Since different users require different types of words, the ability to modify & optimize the word lists to match a specific user is desirable. The Word List Assistant provides various options to help manage multiple Word Lists.

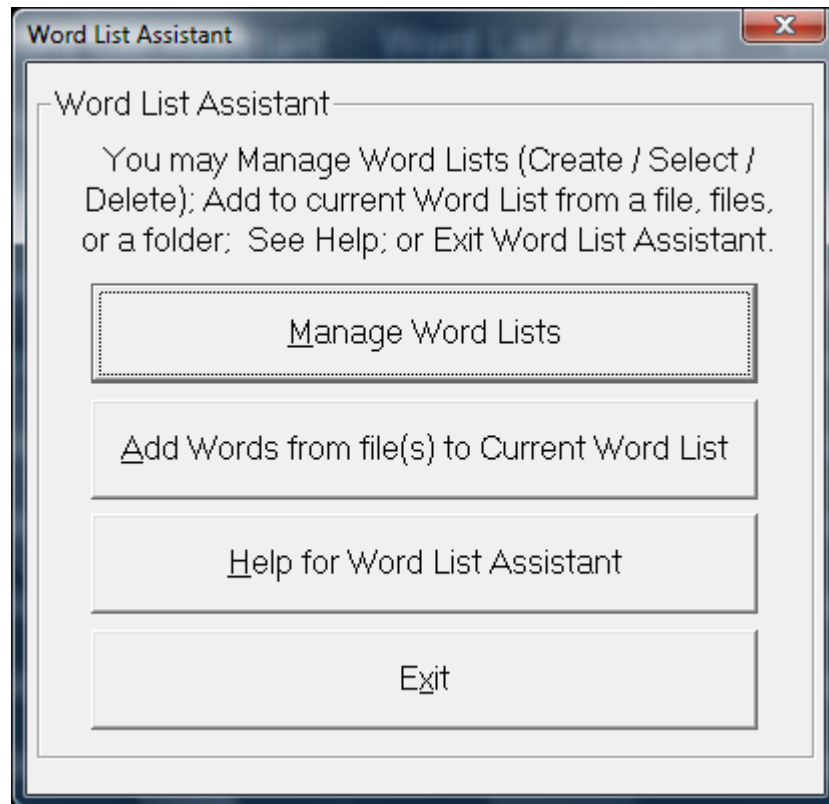
Word List Assistant has the following features and capabilities:

- Always saves the current Word List used by WordComplete by compressing all files into a single, compressed file (using the widely available Zip format)
- Make any available or newly downloaded Word List the current Word List by extracting from the compressed file into the location required for WordComplete

- Read existing Document, Text, HTML files (or of any file type) to count word frequency and add new words
- Remove words from the candidate list so they will not be added into the users Current Word List
- View a Word List
- Rename or Copy a Word List
- Create New Word Lists - an empty list, or with words from existing files
- Merge a Word List with the current Word List
- Delete Word Lists

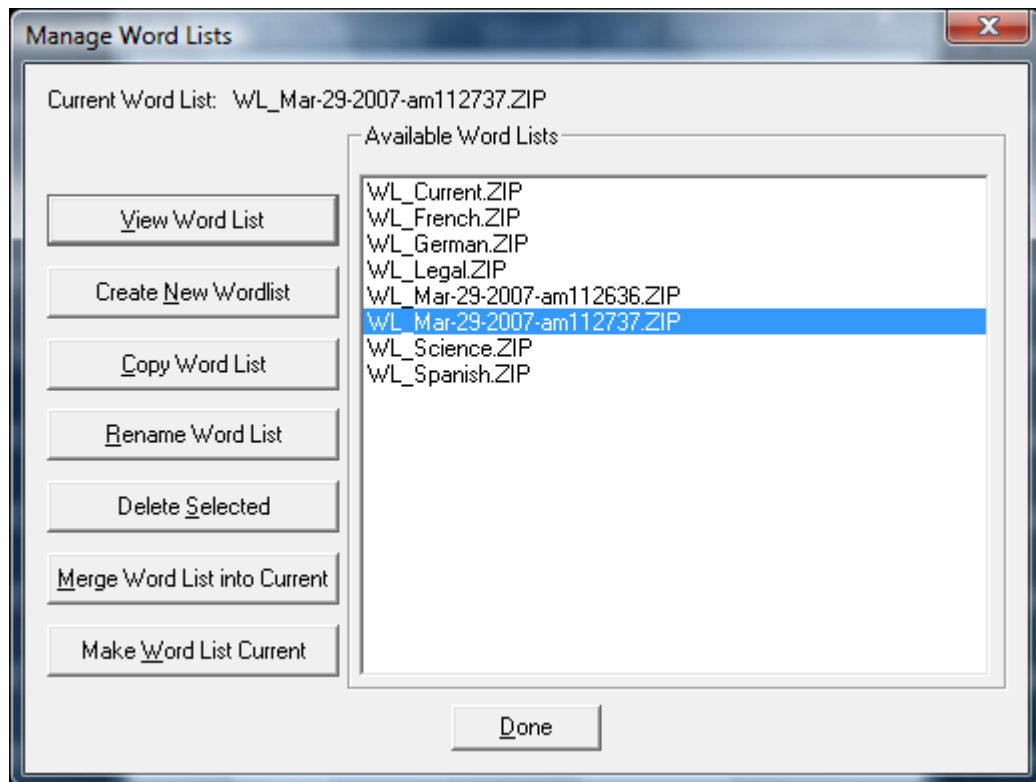
How do I work with Word List Assistant?

When the Word List Assistant is run, you have 4 main options:



- Manage Word Lists (details below)
- Add Words from file(s) to Current Word List (details below)
- Help for Word List Assistant (this document)
- Exit (closes Word List Assistant)

Manage Word Lists



When selected, this option will compress the current Word List (it does not delete the current Word List files) and automatically names the list (WL_[Date]-[am/pm][Time]).

If you select one of the available Word Lists, the list will be opened for viewing.

Hints: Your current Word List will ALWAYS be saved when you enter Manage Word Lists. If the Word List Assistant is used often, this will create many word list files - however, it is easy to select many files (click & drag), then use the Delete Selected option to clear out any unwanted word list files. This automatic approach preserves word lists as snapshots in time, which may be useful if manipulating word lists using the Word List Assistant.

All Word Lists managed with this tool will be prefixed with Word List prefix (WL_) - you do not need to enter it.

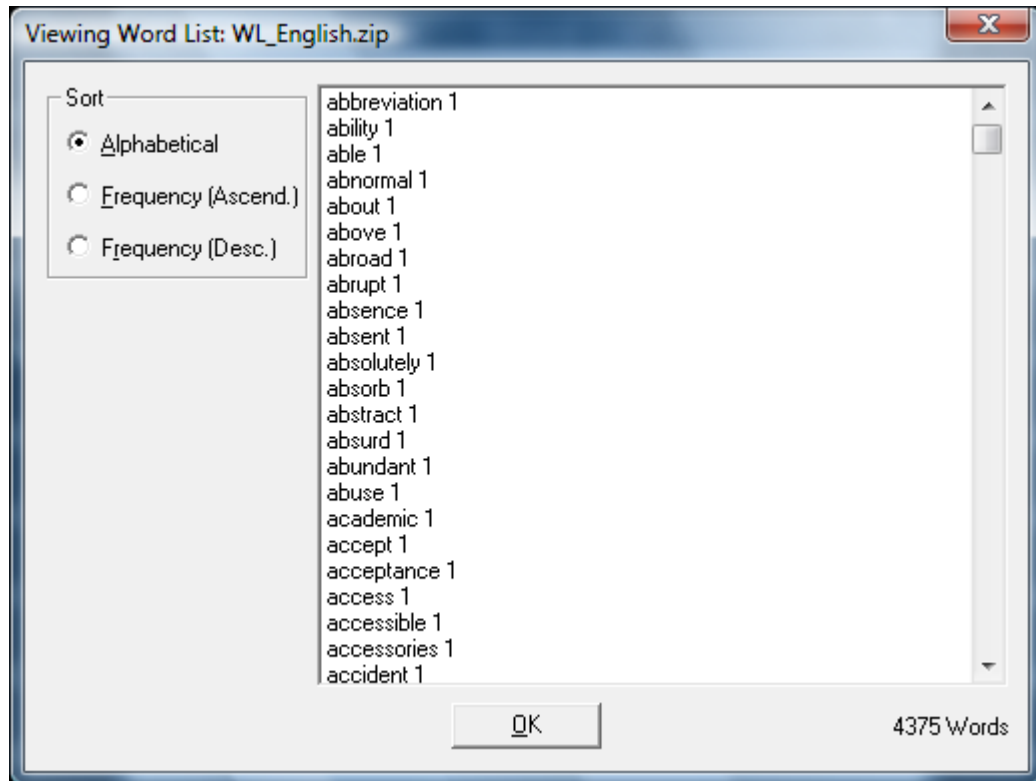
Note: The Word Lists are text files with 3 header lines followed by a word (or words with spaces), a space character, and then a frequency count, completed with a carriage return/line feed character combination. It is recommended to let this tool & WordComplete manage these word lists for you. If you wish to work with these lists directly, you are welcome to, but please be completely familiar with the structure of the existing files prior to modifying them. WordComplete has various checkpoints to handle ill-formed lists, but there is no support for WordComplete operational issues if you modify lists directly.

The internal logic starts at the end of the line and finds the first space character (from the end), then uses the resultant text between this spot and the end-of-the-line to establish the frequency value of the entry. All text from the beginning of the line to this "last-most" space is used as the word list candidate. Commas are not allowed in the word lists, as this is the separator used to identify individual word list candidates.

The Word List files are stored in a WordLists folder underneath the current user's configuration location. To reference the current location, see WordComplete Setup | File | Show Config File Location. Refer to the ConfigPath in the Initialization file for further details.

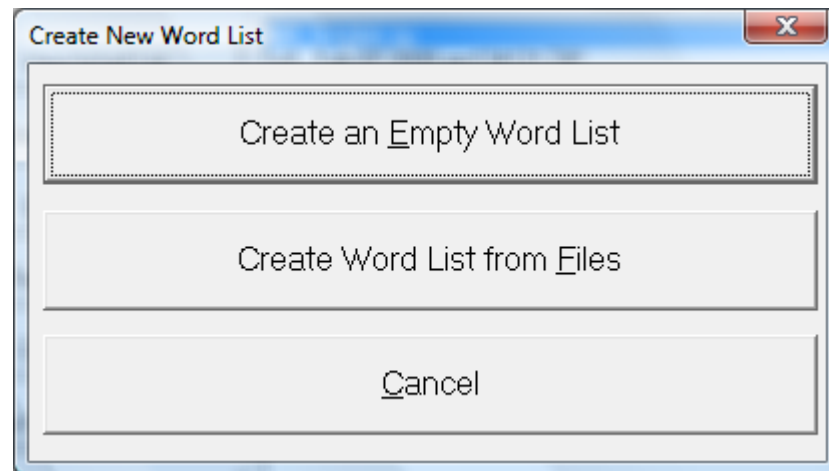
View Word List

You can double-click on a word list to view, or select a word list, and click on this button. When viewing a word list from the Word List Assistant, you can sort the list alphabetically, by frequency (either ascending or descending). When frequency sorted, the list shows the internal representation (numbers) used to properly sort the list.



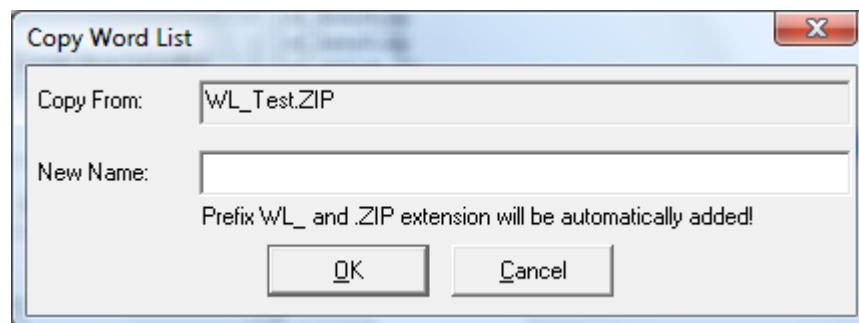
Create New Wordlist

You can create an empty word list, or create a new wordlist from existing files. You will be asked to name the word list. Simply enter the new name (the WL_ prefix and .ZIP extension will be automatically entered). If you select the "from Files" option, you can then select one or more files to use. Depending on your situation, it may be easier to manage many word list files separately, and then merge them to make a final version. Once you are happy with your current word list, you can return to the Word List Assistant, select your most recent word list, and rename (or copy) it to a newly named word list.



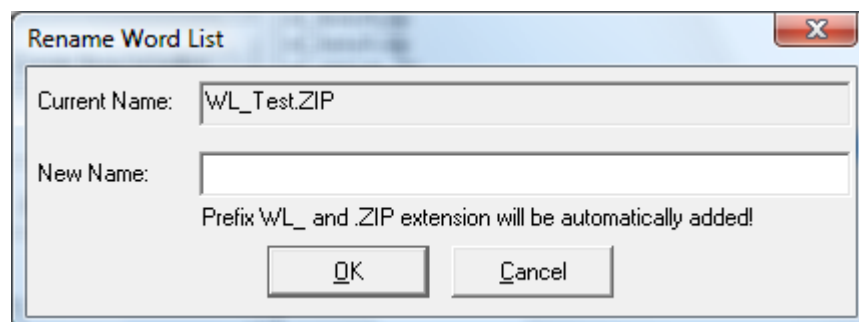
Copy Word List

You can copy an existing word list to a different word list. Simply enter the new name (the WL_ prefix and .ZIP extension will be automatically entered).



Rename Word List

You can rename an existing word list. Enter the new name (the WL_ prefix and .ZIP extension will be automatically entered).

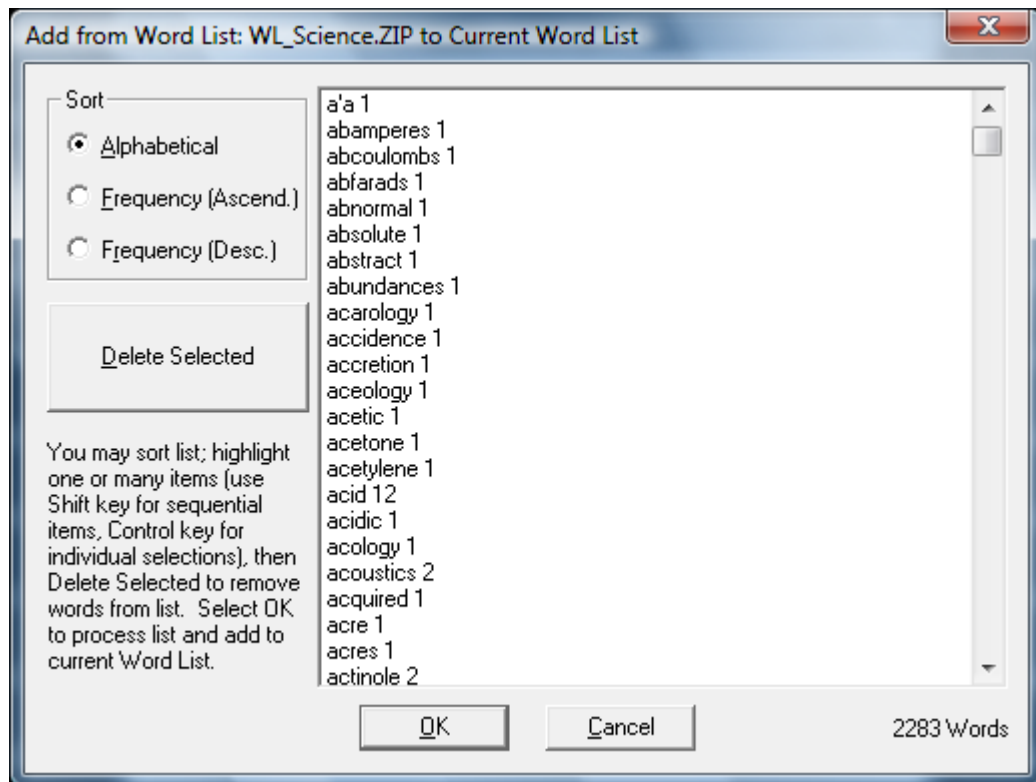


Delete Selected

You can remove (permanently delete!) existing word lists or multiple word lists by highlighting one or many, and click on Delete Selected. **IMPORTANT:** This will destroy the word list files if you confirm the deletion!

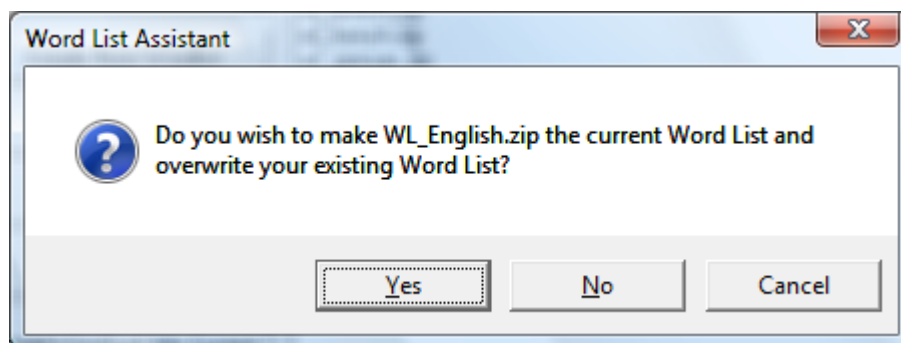
Merge Word List into Current

This merges a selected word list into the current word list. You have the option of deleting any words that are not desired or are inappropriate by highlighting one or many words, and clicking on Delete Selected. Once you are satisfied with the list, click on OK to Add these words to the current word list.



Make Word List Current

This makes the selected word list the current word list used by WordComplete. **IMPORTANT:** This will overwrite your current word list! Also note that the Word List Assistant ALWAYS saves your current word list (as indicated above).



Add Words from file(s) to Current Word List

- Select a File, or Files, or All Files in a Folder
- Process the words - note that large files may take some time...
- Review the new additions to delete any words you do not wish to add - you may sort Alphabetically, or by Frequency (both Ascending and Descending).

Hints: To easily add a small number of words, use the Edit Word lists option directly from WordComplete Setup - the Advanced nature of the Word List Assistant means it doesn't duplicate this basic functionality.

To easily add a specific set of words, enter the words into Notepad, and save the file (default type as Text file), then open the file and process it with this option.

If you wish to edit specific words, add them and then return to the Edit Words dialog.

If you need more flexibility or more control, you may also use Notepad to edit the word lists directly (they are saved as Text files).

It is extremely likely that various character sequences and non-words will be added to the list - Always review the list to delete items that you do not want in your word lists.

If you get a large amount of undesirable character sequences, try converting the file (File | Save As) to a different file type from the source.

Operation Notes

For backwards compatibility, files must be ANSI (rather than Unicode).

A fair amount of error checking is handled within the Word List Assistant, but every last possibility has not been addressed. This tool is meant to bring in basic documents and add the words that a particular user works with most often. If you experience operational errors, reduce the number of files you are processing, increase system memory, or review the documents directly. If you have problems with a particular file type, you may want to convert the file into a different format and try again.

Words are built from the alphabet, and international characters above 128 (ANSI - see Character Map). All punctuation, brackets, parentheses, and the space character, are treated as non-word characters, and end the current word (except the backslash \ and single-quote `).

Advanced Notes: The 2 folders that Word List Assistant works with are the configuration files folder (where the current Word List files are located), and the WordLists sub-folder (where compressed Word Lists are stored, and where temporary Word List files are created (e.g. A.TXT, B.TXT, etc.)). When Managing Word Lists within the Word List Assistant, it is important to realize the "Current" word list is never touched or modified, unless one of the options to modify it is selected (Add Words from Files to Current Word List, Manage Word Lists | Merge Word List with Current, and Manage Word Lists | Make Selected Word List Current).

Although saving the current word list every time the Manage Word List option is selected may seem excessive, it guarantees that Word Lists will not be lost, especially when people new to the Word List Assistant start trying the various options. Since these files may be deleted from with the Manage Word List option, and users familiar with the Word List Assistant will not be constantly creating new backups by going into the Manage Word List option, this seemed the appropriate solution, and is less confusing than the approach tried in the previous Word List Assistant (where the user was asked to name the current backup).

Copyright & License Information

The ZIP32.DLL/UNZIP32S.DLL file used to extract the Zip file was not developed by Innovation Management Group, Inc. The following copyright & license information is included here as required.

=====

This is version 2000-Apr-09 of the Info-ZIP copyright and license.

The definitive version of this document should be available at <ftp://ftp.info-zip.org/pub/infozip/license.html> indefinitely.

Copyright (c) 1990-2000 Info-ZIP. All rights reserved.

For the purposes of this copyright and license, "Info-ZIP" is defined as the following set of individuals:

Mark Adler, John Bush, Karl Davis, Harald Denker, Jean-Michel Dubois, Jean-loup Gailly, Hunter Goatley, Ian Gorman, Chris Herborth, Dirk Haase, Greg Hartwig, Robert Heath, Jonathan Hudson, Paul Kienitz, David Kirschbaum, Johnny Lee, Onno van der Linden, Igor Mandrichenko, Steve P. Miller, Sergio Monesi, Keith Owens, George Petrov, Greg Roelofs, Kai Uwe Rommel, Steve Salisbury, Dave Smith, Christian Spieler, Antoine Verheijen, Paul von Behren, Rich Wales, Mike White

This software is provided "as is," without warranty of any kind, express or implied. In no event shall Info-ZIP or its contributors be held liable for any direct, indirect, incidental, special or consequential damages arising out of the use of or inability to use this software.

Permission is granted to anyone to use this software for any purpose, including commercial applications, and to alter it and redistribute it freely, subject to the following restrictions:

1. Redistributions of source code must retain the above copyright notice, definition, disclaimer, and this list of conditions.
2. Redistributions in binary form must reproduce the above copyright notice, definition, disclaimer, and this list of conditions in documentation and/or other materials provided with the distribution.
3. Altered versions--including, but not limited to, ports to new operating systems, existing ports with new graphical interfaces, and dynamic, shared, or static library versions--must be plainly marked as such and must not be misrepresented as being the original source. Such altered versions also must not be misrepresented as being Info-ZIP releases--including, but not limited to, labeling of the altered versions with the names "Info-ZIP" (or any variation thereof, including, but not limited to, different capitalizations), "Pocket UnZip," "WiZ" or "MacZip" without the explicit permission of Info-ZIP. Such altered versions are further prohibited from misrepresentative use of the Zip-Bugs or Info-ZIP e-mail addresses or of the Info-ZIP URL(s).
4. Info-ZIP retains the right to use the names "Info-ZIP," "Zip," "UnZip," "WiZ," "Pocket UnZip," "Pocket Zip," and "MacZip" for its own source and binary releases.

Except where otherwise noted Copyright © 2007-2009 Innovation Management Group, Inc. All Rights Reserved.

Part III. WordComplete Technical Documentation

Advanced User Notes, Technical Documentation, File Information, and various Other Information about WordComplete.

Chapter 4 - Advanced User Notes details additional product information, Final Release Notes, Technical Notes, Advanced User Notes, Initialization File Documentation, Application Notes, Developer information, and Customer Suggestions.

Chapter 4. Advanced User Notes

Advanced User Notes & Information

The Advanced User Notes and Technical Documentation covers a wide-range of topics & information. Detailing all of the features, options, settings mixed in with the standard product help would overwhelm the majority of users, so the more technical and advanced portions are included here.

Note: For up-to-date information, and other specific technical issues, it will always be important to refer to the on-line support database at <http://www.imgpresents.com/imgfaq.htm>

If you have been referred to this section, or have been unable to resolve your question(s) or problems within this manual, on-line help, and tutorial, or are an advanced user familiar with Windows Initialization files (INI type files), the Registry, and wish to learn all of WordComplete configuration Options, please read the following chapter. For developers, integrators, or technicians, the following information should be read in its entirety - also refer to the IMG Developer's Kit for even more options & other advanced information.

Final Release Notes

Version 1.20 is the first public release of WordComplete. This utilizes the Word Completion and adaptive Word Prediction technology previously available in OnScreen, the Assistive Technology version of Innovation Management Group, Inc.'s My-T-Soft family of onscreen keyboards. WordComplete provides a customizable front-end user interface for use with either a physical keyboard or a virtual keyboard. March 5, 2008

Version 1.20 Release 2 - maintenance updates, memory issues. August 5, 2009

Version 1.20 Release 4 - Windows 7 compatibility, license updates. Note there is no Release 3 - synchronize with IMG Products DVD release.

Version 1.20 Release 4 - 11/24/2009

WordComplete Files & File Notes & Installation Information

WordComplete Files & File Notes

Files located in the WordComplete Installation Directory:

The following files are REQUIRED for proper operation of

WordComplete: (Version specific files indicated)

* - indicates the minimum files required for functional operation of WordComplete

- WordComplete.EXE* - WordComplete executable

- WordComplete.INI* - WordComplete Initialization File

- WordComplete.ORG - Original WordComplete Initialization File
- HOOKS.DLL* - WordComplete Dynamic Link Library
- WordsDLL.DLL* - WordComplete Dynamic Link Library - Word List Lookup
- IMGVERS.DLL* - IMG Dynamic Link Library
- HELP*.html, HELP\IMAGES*.png - WordComplete Help
- LICENSE.EXE* - IMG License Manager
- LICENSE2.EXE* - IMG License verification only (read-only access)
- LICENSE.LIC* - IMG License File
- LICENSE.ORG - Original IMG License File
- LICENSE.TXT - IMG End User License Agreement
- README.TXT - Product Installation text file
- MANIFEST.TXT - Reference File from Build
- IMGUTIL.EXE - used for installation and uninstallation of software
- A.TXT - Z.TXT,-.TXT, etc. - Word List files
- WORDLIST.EXE - Word List Assistant, read in files, save Word List files, install new Word Lists, Requires ZIP32.DLL, UNZIP32S.DLL
- IMG SOUND.EXE* - Used for Sounds and Text-To-Speech
- UNZIP32S.DLL - Dynamic Link Library for installation and updates
- ZIP32.DLL - Zip library for compressing Word Lists
- uninstall.exe - Used for un-installation link (MSI Installs)

Other Folders:

WORDLISTS - Word Lists - saved and international

- MANAGER\ESTABLISH.EXE - this is a post installation utility that establishes or updates the IMG Download Manager and IMG License Manager files as outlined below.

Located in \Program Files\Common Files\Innovation Management Group\Download Manager directory:

- IMGCLEAN.EXE - used to complete uninstall of software, required for Control Panel Add/Remove Programs
- IMG DLM.EXE - The IMG Download Manager - Installed by MANAGER\ESTABLISH.EXE
- IMGNET.DLL - The IMG Download Manager Library - Installed by MANAGER\ESTABLISH.EXE

Located in \Program Files\Common Files\Innovation Management Group\License Manager directory:

- LICENSE.DLL - library used by the IMG License Manager and IMG Download Manager

WordComplete Initialization File Documentation (WORDCOMPLETE.INI)

Listed below are settings and information for specific applications that require special actions by WordComplete, along with the Configuration settings for WordComplete.

IMPORTANT NOTE: The DoNotUseRegistry and ConfigPath settings are always initially read from the WordComplete.INI in the installation folder (location of WordComplete.exe). Only if DoNotUseRegistry=1 will the ConfigPath be evaluated to determine where to read the user's settings from.

Note: For USB licensing, the settings are ConfigPath=0, and DoNotUseRegistry=1. This uses the location on the USB device, and not the registry (so settings are carried from system to system on the USB device).

All Settings are the default Settings of WordComplete.

[Configuration]

The following are the default settings for WordComplete at Install.

ConfigPath=1

This setting determines where the WordComplete.INI file will be located. ConfigPath=0 means the WordComplete.INI will be in the installation folder - there are no per user configuration files with this setting and user permissions must allow read-write access to WordComplete, or users must run with a fixed (read-only) configuration. When ConfigPath=1 or ConfigPath=2, each user will have their own configuration files. If ConfigPath=3, these are in shared among all users in a public location (this is the preferred setting if global settings for all users is desired).

Note: When DoNotUseRegistry=0, the ConfigPath setting is used only for storing of the Dictionary files, not the program settings.

Note that the WordComplete.INI file in the installation folder determines the location of new users' configuration files, and if an administrator changes this after WordComplete has already been used by other users, their existing individual configuration files will NOT be transferred to the new location. What will happen is the software will be unable to find configuration files for the current user in the current specified path, and a copy of the current configuration files will be used as a starting point for this new location.

This is a breakdown by Operating System of the specific locations used - [User] indicates the actual user logged onto the system, and [ProductDir] indicates the Product's directory name, e.g. WordComplete folder.

ConfigPath Locations

ConfigPath: 0

Windows 2000/XP: \Program Files \[ProductDir]

Windows Vista: \Program Files \[ProductDir]

ConfigPath: 1

Windows 2000/XP: C:\Documents and Settings \[User] \Application Data \Innovation Management Group \[ProductDir]

Windows Vista: C:\Users \[User] \AppData \Roaming \Innovation Management Group \[ProductDir]

ConfigPath: 2

Windows 2000/XP: C:\Documents and Settings \[User] \Local Settings \Application Data \Innovation Management Group \[ProductDir]

Windows Vista: C:\Users \[User] \AppData \Local \Innovation Management Group \[ProductDir]

ConfigPath: 3

Windows 2000/XP: C:\Documents and Settings \All Users \Application Data \Innovation Management Group \[ProductDir]

Windows Vista: C:\ProgramData \Innovation Management Group \[ProductDir]

NoAnnounce=0

If NoAnnounce=1, then the "Text to Speech is available" announcement is not spoken. This setting must be set in the INI in the Installation directory, i.e. where IMG SOUND.EXE is located

[Settings]

DoNotUseRegistry=1

If DoNotUseRegistry=0, then the registry is used for each user (HKEY_CURRENT_USER). The location is at [HKEY_CURRENT_USER \Software \Innovation Management Group \WordComplete \Settings]. If DoNotUseRegistry=1, then the INI file is used (as specified by the ConfigPath setting).

186=% %008% %186% %032

188=% %008% %188% %032

190=% %008% %190% %032

191=% %008% %191% %032

49=% %008% %049% %032

Punctuation characters rules. Do not modify these.

Note: The numbers (in decimal, 3 digits each), refer to Windows Virtual Key codes.

InsertSpaceAtEnd=1

Inserts a space after word auto completion.

AllowVkBackUndo=1

After a word is auto completed pressing the backspace key will show the word list candidates window. With each backspace the word list candidates window is updated, until the beginning of the word.

AllowVkEscUndo=1

When Escape key is pressed after a word auto completion, returns to the position when the enter Key (or whatever method was used to autocomplete the word) was pressed and shows the word list candidates window.

ShowSuffixes=1

If ShowSuffixes=1 WordComplete will show the Suffixes window after word was auto completed.

ShowInline=1

If ShowInline=1, this Enables (shows) the inline auto complete window.

HorizontalList=0

HorizontalList=1 makes the list of predicted words horizontal. If HorizontalList=0 the list is vertical.

AlignOnWords=0

Determines how the list of predicted is aligned with the currently typed word.

0 - aligns the predicted words window with the beginning of the currently typed word.

1 - tries to align the words from the listbox with the beginning of the currently typed word.

2 - moves with the caret as you type.

SpeakWordDelay=2000

When speaking of all the words from the list is enabled (SpeakAll), this determines the delay between each word spoken. The entry is in milliseconds, e.g. 1000 means 1 second.

SpeakOnComplete=0

After autocompletion of a word, will speak the word that was auto completed.

SpeakSelection=1

When SpeakSelection=1, this will speak the currently selected word from the list of selected words.

SpeakAll=1

When SpeakAll=1, this will speak all the words from the word list.

SpeakEnabled=1

Enable or disable speech. If Text-To-Speech is not available, this will automatically be set to 0.

EnableTransperancy=1

Enable transparency of the predictions window.

LayeredPct=211

This is the transparency level for the predictions window. It can range from 1-255, with 255 being opaque (NOT transparent) At lower levels, the windows becomes more & more transparent

EnableTransperancyInline=1

Enable transparency of the inline auto complete window.

LayeredPct=211

This is the transparency level for the inline auto complete window. It can range from 1-255, with 255 being opaque (NOT transparent) At lower levels, the windows becomes more & more transparent

HowManyWords=7

The maximum number of words will be shown inside the prediction window. Do not make greater than 9.

EnableAutoLearn=1

Enable or disable the learning of new words, or updating the word frequencies of existing words.

MinAutoLearnLength=3

How long the word typed must be in order to be learned (added to the dictionary) or its frequency updated (in the dictionary).

UseNumbers=1

Enable the use of number keys (0-9) to complete a word.

WordCompleteKey=13

This is the keyboard key that will be used to perform the autocomplete.

Change to 9 for TAB, 32 for SPACEBAR, or 13 for ENTER. Do not use any other values.

FixedSizeInline=1

If set to 1, the size of the font of the inline autocomplete will be matched to the font of the application you are currently typing in.

UseSameFont=0

If UseSameFont=1, the font size and color of the inline window will be the same as Word List candidates window.

ShowBorderInline=0

Shows a thin border around the inline autocomplete window.

DisableWordlistTab=0

If DisableWordListTab=1, then this disables the wordlist tab (will not be shown at all) in the settings dialog. WordComplete must be restarted for this change.

FontFaceInline=Arial

The font family of the inline autocomplete window.

FontSizeInline=12

The font size of the inline autocomplete window in pixels.

FontWeightInline=400

The font weight (how bold it is) of the inline autocomplete window. Higher values means more bolder text.

FontColorInline=14578478

The font color of the inline autocomplete window. This is a decimal representation of the HEX value of the color (0x00BBGRR).

BackColorInline=16777215

The Background color of the inline autocomplete window. This is a decimal representation of the HEX value of the color (0x00BBGRR).

FontFaceList=Arial

The font family of the text in the prediction window .

FontSizeList=21

The font size of the prediction window in pixels.

FontWeightList=144

The font weight (how bold it is) of the prediction window . Higher values means more bolder text.

FontColorList=16777215

The font color of the prediction window. This is a decimal representation of the HEX value of the color (0x00BBGRR).

FontColorListSelect=0

The font color of the selected word from the prediction window. This is a decimal representation of the HEX value of the color (0x00BBGRR).

BackColorList=8404992

The Background color of the prediction window. This is a decimal representation of the HEX value of the color (0x00BBGRR).

BackColorListSelect=65535

The Background color of selected item from the prediction window. This is a decimal representation of the HEX value of the color (0x00BBGRR).

KeyboardClass1=My-T-Soft

To integrate with other applications. The WordComplete will stick to the top/sides of your application instead of following where you type.

KeyboardClass2=My-T-Mouse

To integrate with other applications. The WordComplete will stick to your application instead of following where you type. The internal logic will check KeyboardClass1, and if it cannot find a window with that class, then it will check KeyboardClass2.

SingleClick=1

If set, allows a single click on List Box to select a word (in addition to double click)

MagActive=1

INI only, if MagActive=1, the WordComplete works with The Magnifier & sets the mouse position when The Magnifier is in use. This helps reduce screen positioning issues when used with IMG's The Magnifier.

Editor=Notepad

INI only, Editor setting is used for external editing of word lists, default can be overridden by setting this to a program to use (internal API call using ShellExecute and the "open" verb). Program must be able to edit file based on first parameter, i.e. someeditor.exe %1, where %1 is the file name.

[Help]

ADVANCEDWORDLIST=wordlistassistant.html

The help section is for external IMG utilities & links to the HTML help

Application Notes

Text-To-Speech Notes

Windows XP and Windows Vista have Text-To-Speech capability already available. You can access Speech settings from the Control Panel. In Windows 2000, the speech capabilities need to be added. On the IMG Product CD, you can find an installation file in the Speech folder (use Windows Explorer to browse the CD). The Speech capabilities can be added with this installation file.

If there is a problem with your sound card, or audio capabilities on the system, speech may also be disabled. Refer to the Windows Control Panel and System | Device Manager and the Speech/Sound applets for further details or to resolve any problems affecting Text-To-Speech on your system. When available, WordComplete will enable this capability.

Compatibility Notes

To synchronize the position of the word list candidate window and the inline window, WordComplete uses Windows Active Accessibility features (Windows Events). Older programs may not fully support these events fully or at all, and certain types of windows (command prompts,

special windows, etc.) may also not handle these events consistently. Also, depending on the version of Windows you are using and Service Packs & updates, operation may be inconsistent among different applications. If you experience any of these types of issues, you should try some or all of the following:

- Make sure your version of Windows is completely up-to-date (Windows Updates)
- Try clicking with the mouse on the application first, before typing
- Close and restart WordComplete
- Close any other program other than the application you are trying to use
- Check for updates for WordComplete

There is a known compatibility issue with virtual keyboards and shifted-punctuation after a word completion in Windows 2000. The automatic backspace that occurs with a period or comma does not occur correctly with shifted-punctuation characters such as the exclamation point and question mark. An extra space is added, because the automatic backspace does not occur.

Windows Developers

Note: The external WordsDLL.DLL interface is outlined and specified in the IMG Developer's Kit so alternative approaches to the word lookup can be used with the user-interface presented by WordComplete. Depending on customer requirements and demands, there may be additional tools and interface details available. Refer to the link below to gain access to the IMG Developer's Kit.

Developers Notes, downloadable files, sample code, and other useful integration and programming information is available at Innovation Management Group, Inc.'s Web Site:
<http://www.imgpresents.com/imgdev.htm>

Developers wishing more technical information about WordComplete, messaging information, and details how applications can interface with WordComplete should contact Innovation Management Group, Inc.

For Questions or other information you may contact:

Innovation Management Group, Inc.
Customer Service
179 Niblick Road #454
Paso Robles, CA 93446
USA
(800) 889-0987 (US & Canada)
(818) 701-1579
(818) 936-0200 (fax)
<cs@imgpresents.com>
<http://www.imgpresents.com>

Customer Suggestions

We appreciate and welcome suggestions from our users for features that you would like to see in future versions of WordComplete. Please feel free to send us any comments you may have that would make our product more useful to you. All suggestions and ideas become the property of Innovation Management Group, Inc.

Send to:

Innovation Management Group, Inc.
Customer Service
179 Niblick Road #454
Paso Robles, CA 93446
USA

Or contact us directly:

(800) 889-0987 (US & Canada)
(818) 701-1579
(818) 936-0200 (fax)
<cs<http://www.imgpresents.com>

Date: _____

Name: _____

Address: _____

City: _____

State: _____ Zip: _____

WordComplete Comments and Suggestions:

Version 1.20 Release 4

11/24/2009

Copyright © 2007-2009 by Innovation Management Group, Inc.

All Rights Reserved.

My-T-Mouse®, My-T-Pen®, My-T-Touch® and My-T-Soft® are registered trademarks of Innovation Management Group, Inc.

Index

A

Add/Remove Programs, 1, 6
Advanced User Notes, 40
AllignOnWords - INI setting, 44
AllowVkBackUndo - INI setting, 43
AllowVkEscUndo - INI setting, 43
Alt-W - Hot Key, 19
Alt-X - Hot Key, 19
Appearance Settings, 24
Application Notes, 46

B

BackColorInline - INI setting, 45
BackColorList - INI setting, 45
BackColorListSelect - INI setting, 46

C

Catalog, 13
CD (CD-ROM or DVD), 1, 5
Certificate of Authenticity, 1, 5
Check for Updates, 22
Commonly Asked Questions, 11
Compatibility, 46
Complete word key, 21
ConfigPath - INI setting, 42
Contacting IMG, 47
Copyrights, 2
Customer Service, 12
Customer Suggestions, 48
Customer Support, 12

D

Developers, 47
Disable Wordlist Tab - INI setting, 45
Display, 11
DoNotUseRegistry - INI setting, 43
DVD (CD-ROM or DVD), 1, 5

E

Editor - INI setting, 46
EnableAutoLearn - INI setting, 44
EnableTransperancy - INI setting, 44
EnableTransperancyInline - INI setting, 44
equipment, 5
Evaluation License, 9
Export Settings, 22

F

Features, 4
File Notes, 40
Files - Product Files Installed, 40
Final Release Notes, 40
FixedSizeInline - INI setting, 45
FontColorInline - INI setting, 45
FontColorList - INI setting, 45
FontColorListSelect - INI setting, 45
FontFaceInline - INI setting, 45
FontFaceList - INI setting, 45
FontSizeInline - INI setting, 45
FontSizeList - INI setting, 45
FontWeightInline - INI setting, 45
FontWeightList - INI setting, 45

G

Guide (Using), 2

H

hard disk space, 5
hardware requirements, 5
Help - INI section, 46
HorizontalList - INI setting, 44
Hot Keys, 19
HowManyWords - INI setting, 44

I

IMG, 6, 7
Import Settings, 22
Important User Information, 2
INI - File Documentation
(WORDCOMPLETE.INI), 42

Initialization File Documentation
(WORDCOMPLETE.INI), 42
Innovation Management Group, Inc., 12
InsertSpaceAtEnd - INI setting, 43
Install
 Installing, 1, 5
 Installing / Un-Installing, 5

K

Keyboard Settings, 21
Keyboard shortcuts, 19
KeyboardClass1 - INI setting, 46
KeyboardClass2 - INI setting, 46

L

LayeredPct - INI setting, 44
LayeredPctInline - INI setting, 44
License Key, 1, 5, 7
License Manager, 7
Licensing, 7
Licensing Information, 6

M

MagActive - INI setting, 46
messaging information, 47
Min Auto Learn Length - INI setting, 44

P

Product Catalog, 13
Programming Information, 47
Punctuation Characters rules, 43

Q

Questions
 Commonly Asked Questions, 11
Quick Start, 1

R

Release Information, 1, 5
Release Notes, 40
requirements, 5

S

Selecting Words (from list), 17
Serial Number, 1, 5, 7
Settings section [Settings] (INI file), 42
Setup, 1
Short-Cut, 4
ShowBorderInline - INI setting, 45
ShowInline - INI setting, 43
ShowSuffixes - INI setting, 43
SingleClick - INI setting, 46
SpeakAll - INI setting, 44
SpeakEnabled - INI setting, 44
SpeakOnComplete - INI setting, 44
SpeakSelection - INI setting, 44
SpeakWordDelay - INI setting, 44
Speech Settings, 23
Suggestions, 48
Support
 Customer Support, 12
 website, 12
System requirements, 5

T

Technical Documentation Section, 40
Trademarks, 2
Typing Words (from list), 17

U

Un-Install, 6
Updates - Check for, 22
UseNumbers - INI setting, 44
UseSameFont - INI setting, 45
Using this guide, 2

V

Version (history), 40

W

- website, 12
- What is WordComplete, 3
- What You Need, 5
- Why Do I Need WordComplete?, 4
- Windows Applications, 11
- Windows Developers, 47
- Word Complete Key - INI setting, 45
- Word List Assistant, 31
- WordComplete General Operation, 16
- WORDCOMPLETE.INI File
 - Documentation, 42
 - Wordlists Settings, 26